

**South Union School
Southborough, MA
Building Elevations and Plans
2008 Work**

11/13/2008, Revised 1/9/2009

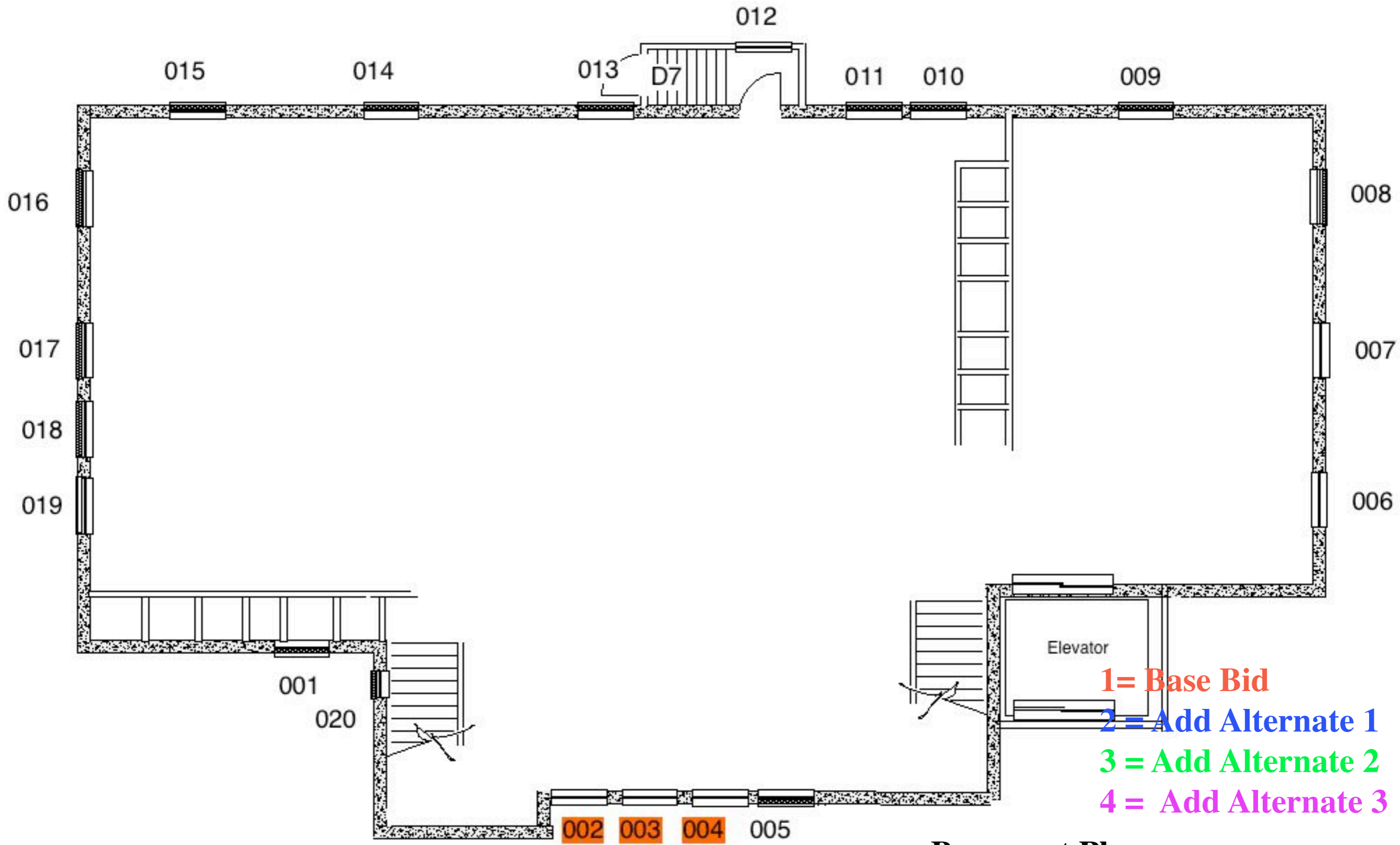
(Floor Plans colored windows pages 3-5, Elevations colored windows pages 7-10, Window Door Schedule clarified pages 12-15, Window Details added pages 18, 19)

**DMH Enterprises, Architects
104 Federal Street
Salem, MA 01970
617-745-2172
davidatsalem@comcast.net**

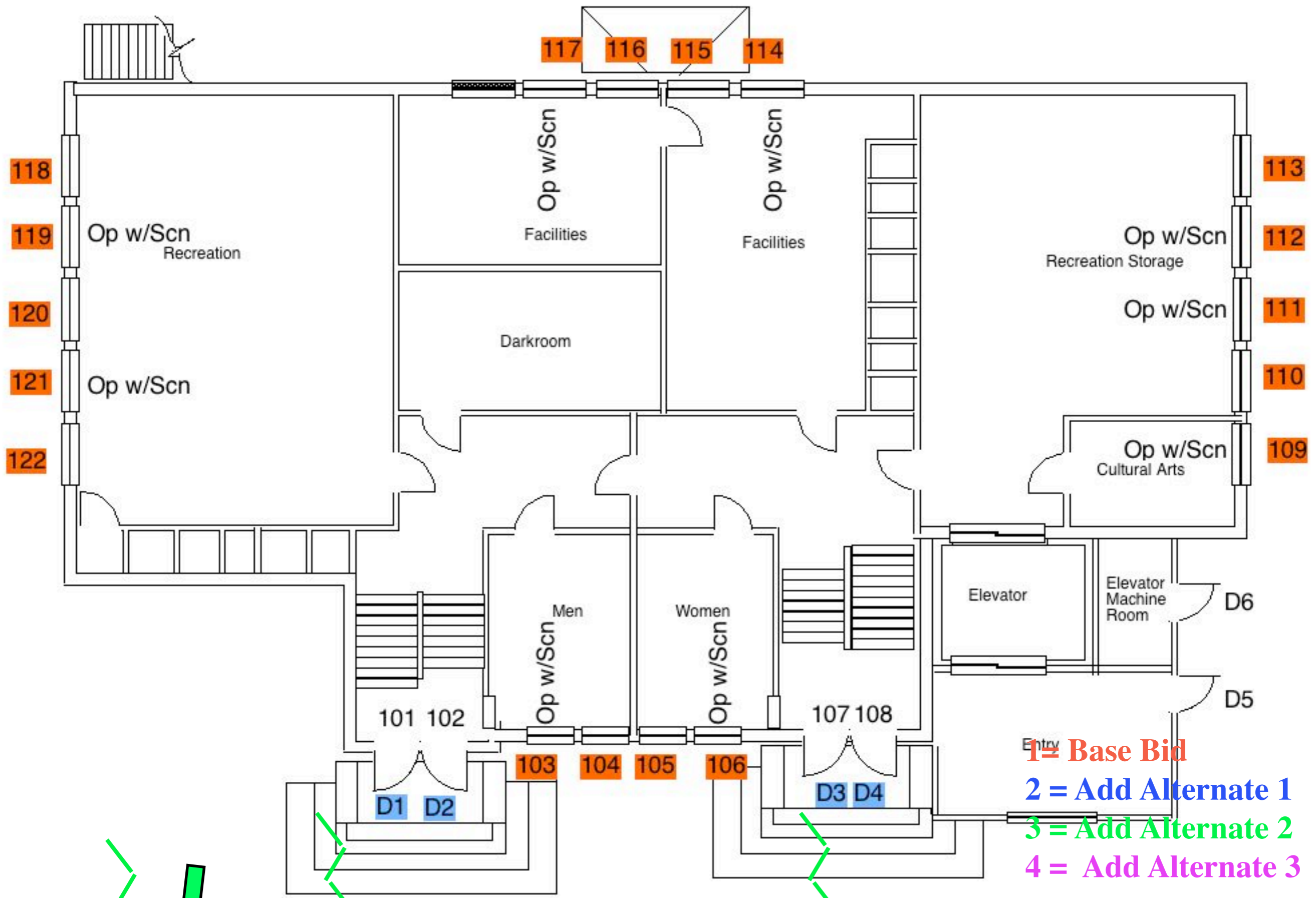
The following pages detail the window and door numbering system and describes the type of storm window to be installed.

“Op w/Scn” is operable with screen. All others are fixed panels, although they can be removed and reinstalled at will.

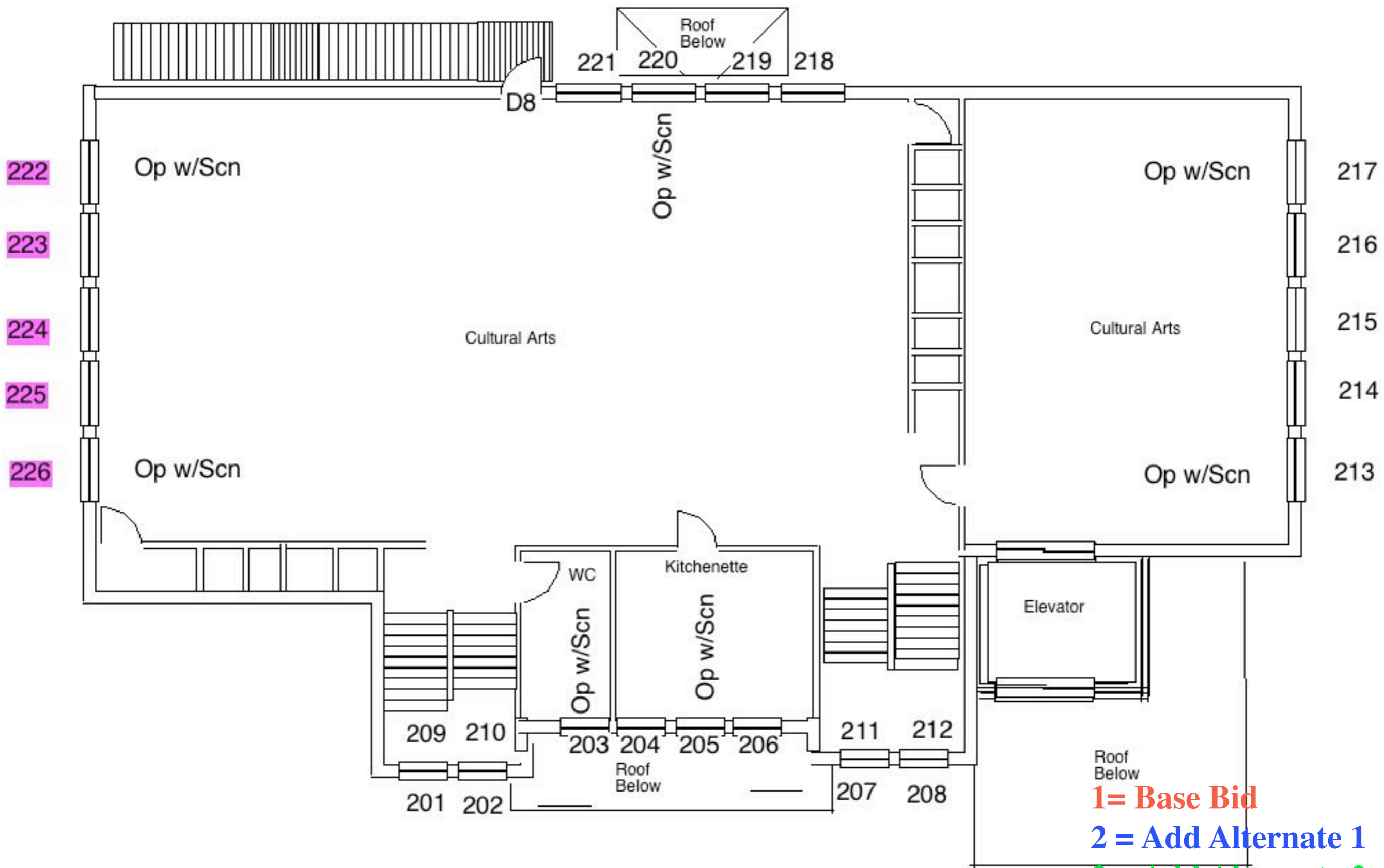
Some windows (such as the boarded up basement windows) are not scheduled to be treated.



Basement Plan



First Floor Plan



- 1 = Base Bid
- 2 = Add Alternate 1
- 3 = Add Alternate 2
- 4 = Add Alternate 3

Second Floor Plan

The following pages detail the treatment for each window and describe the type of storm window to be installed.

1= Base Bid

2 = Add Alternate 1

3 = Add Alternate 2

4 = Add Alternate 3

A colored number indicates 2008 work. All others are scheduled for 2009 or later, depending upon the monies available and the bidding results.



South Elevation



- Base Bid
- Add Alternate 1
- Add Alternate 2
- Add Alternate 3

East Elevation



Base Bid
Add Alternate 1
Add Alternate 2
Add Alternate 3

North Elevation



- Base Bid
- Add Alternate 1
- Add Alternate 2
- Add Alternate 3

WEST ELEVATION

The following pages describe the characteristics of each window and door and detail the treatment for each window and describe the type of storm window to be installed.

0 = Base Bid

1 = Add Alternate 1

2 = Add Alternate 2

3 = Add Alternate 3

Window/Door/Stair Work

serial	Window No	Elevation	Floor	Size	Size Type Fixed	Size Type DH	Storm Type Fixed	Storm Type Operable	Storm Type Screen	Grate	Blocked	Notes	Repair	Hardware	Phase
2	002	South	Basement	3'0 X 3'5	X					X			Remove grate, prepare and repaint. Remove sash, remove loose glazing, replace missing glazing with new compound, prime paint, repaint sash, reinstall sash, reinstall grate.		0
3	003	South	Basement	3'0 X 3'5	X					X			Remove grate, prepare and repaint. Remove sash, remove loose glazing, replace missing glazing with new compound, prime paint, repaint sash, reinstall sash, reinstall grate.		0
4	004	South	Basement	3'0 X 3'5	X					X			Remove grate, prepare and repaint. Remove sash, remove loose glazing, replace missing glazing with new compound, prime paint, repaint sash, reinstall sash, reinstall grate.		0
8	103	South	First	2'9 X 7'0		X		X	X				Remove sash, remove loose glazing, replace missing glazing with new compound, prime paint, repaint sash, re-rope sash, reinstall sash. Install interior storm window	Install two lift handles on lower sash, install automatically locking device.	0
9	104	South	First	2'9 X 7'0		X	X						Remove sash, remove loose glazing, replace missing glazing with new compound, prime paint, repaint sash, re-rope sash, reinstall sash. Install interior storm window		0
25	105	South	First	2'9 X 7'0		X	X						Remove sash, remove loose glazing, replace missing glazing with new compound, prime paint, repaint sash, re-rope sash, reinstall sash. Install interior storm window		0
26	106	South	First	2'9 X 7'0		X		X	X				Remove sash, remove loose glazing, replace missing glazing with new compound, prime paint, repaint sash, re-rope sash, reinstall sash. Install interior storm window	Install two lift handles on lower sash, install automatically locking device.	0
29	109	East	First	4'0 X 7'6		X		X	X				Remove sash, remove loose glazing, replace missing glazing with new compound, prime paint, repaint sash, re-rope sash, reinstall sash. Install interior storm window	Install two lift handles on lower sash, install automatically locking device.	0
42	110	East	First	4'0 X 7'6		X	X						Remove sash, remove loose glazing, replace missing glazing with new compound, prime paint, repaint sash, re-rope sash, reinstall sash. Install interior storm window		0

Window/Door/Stair Work

serial	Window No	Elevation	Floor	Size	Size Type Fixed	Size Type DH	Storm Type Fixed	Storm Type Operable	Storm Type Screen	Grate	Blocked	Notes	Repair	Hardware	Phase
43	111	East	First	40 X 7'6		X		X	X				Remove sash, remove loose glazing, replace missing glazing with new compound, prime paint, repaint sash, re-rope sash, reinstall sash. Install interior storm window	Install two lift handles on lower sash, install automatically locking device.	0
44	112	East	First	40 X 7'6		X		X	X				Remove sash, remove loose glazing, replace missing glazing with new compound, prime paint, repaint sash, re-rope sash, reinstall sash. Install interior storm window	Install two lift handles on lower sash, install automatically locking device.	0
45	113	East	First	40 X 7'6		X	X						Remove sash, remove loose glazing, replace missing glazing with new compound, prime paint, repaint sash, re-rope sash, reinstall sash. Install interior storm window		0
55	114	North	First	40 X 7'6		X		X	X				Remove sash, remove loose glazing, replace missing glazing with new compound, prime paint, repaint sash, re-rope sash, reinstall sash. Install interior storm window	Install two lift handles on lower sash, install automatically locking device.	0
56	115	North	First	40 X 7'6		X	X						Remove sash, remove loose glazing, replace missing glazing with new compound, prime paint, repaint sash, re-rope sash, reinstall sash. Install interior storm window		0
57	116	North	First	40 X 7'6		X	X						Remove sash, remove loose glazing, replace missing glazing with new compound, prime paint, repaint sash, re-rope sash, reinstall sash. Install interior storm window		0
58	117	North	First	40 X 7'6		X		X	X				Remove sash, remove loose glazing, replace missing glazing with new compound, prime paint, repaint sash, re-rope sash, reinstall sash. Install interior storm window	Install two lift handles on lower sash, install automatically locking device.	0
59	118	West	First	40 X 7'6		X	X						Remove sash, remove loose glazing, replace missing glazing with new compound, prime paint, repaint sash, re-rope sash, reinstall sash. Install interior storm window		0
66	119	West	First	40 X 7'6		X		X	X				Remove sash, remove loose glazing, replace missing glazing with new compound, prime paint, repaint sash, re-rope sash, reinstall sash. Install interior storm window	Install two lift handles on lower sash, install automatically locking device.	0

Window/Door/Stair Work

serial	Window No	Elevation	Floor	Size	Size Type Fixed	Size Type DH	Storm Type Fixed	Storm Type Operable	Storm Type Screen	Grate	Blocked	Notes	Repair	Hardware	Phase
67	120	West	First	4'0 X 7'6		X	X						Remove sash, remove loose glazing, replace missing glazing with new compound, prime paint, repaint sash, re-rope sash, reinstall sash. Install interior storm window		0
68	121	West	First	4'0 X 7'6		X		X	X				Remove sash, remove loose glazing, replace missing glazing with new compound, prime paint, repaint sash, re-rope sash, reinstall sash. Install interior storm window	Install two lift handles on lower sash, install automatically locking device.	0
69	122	West	First	4'0 X 7'6		X	X						Remove sash, remove loose glazing, replace missing glazing with new compound, prime paint, repaint sash, re-rope sash, reinstall sash. Install interior storm window		0
														Total Base/Alternate	0
70	D1	South	First	2'9 X 6'11								Exterior Door, West Set, LH (from exterior)	Remove dead bolts and fill, repair base with Abatron epoxy fillers, sand smooth, repaint	Install new set Von Duprin 98/9975 Mortise Lock Exit Device with new exterior lock set.	1
71	D2	South	First	2'9 X 6'11								Exterior Door, West Set, RH (from exterior)	Repair base with Abatron epoxy fillers, sand smooth, repaint	Install new set Von Duprin 98/9927 Series Exit Device (Vertical Bar).	1
72	D3	South	First	2'9 X 6'11								Exterior Door, East Set, LH (from exterior)	Remove dead bolts and fill, repair base with Abatron epoxy fillers, sand smooth, repaint	Install new set Von Duprin 98/9975 Mortise Lock Exit Device with new exterior lock set.	1
73	D4	South	First	2'9 X 6'11								Exterior Door, East Set, RH (from exterior)	Repair base with Abatron epoxy fillers, sand smooth, repaint	Install new set Von Duprin 98/9927 Series Exit Device (Vertical Bar).	1
														Total Base/Alternate	1

Window/Door/Stair Work

serial	Window No	Elevation	Floor	Size	Size Type Fixed	Size Type DH	Storm Type Fixed	Storm Type Operable	Storm Type Screen	Grate	Blocked	Notes	Repair	Hardware	Phase
76												West approach stair. Repair concrete	Excavate cracks and repair cracks horizontal and vertical with Abatron Aboweld 55-1 epoxy filler. Hold back final surface 1/16 inch and sprinkle sand on wet joint to match adjoining surface.		2
77												West door stair. Repair concrete	Excavate cracks and repair cracks horizontal and vertical with Abatron Aboweld 55-1 epoxy filler. Hold back final surface 1/16 inch and sprinkle sand on wet joint to match adjoining surface.		2
78												East door stair. Repair concrete	Excavate cracks and repair cracks horizontal and vertical with Abatron Aboweld 55-1 epoxy filler. Hold back final surface 1/16 inch and sprinkle sand on wet joint to match adjoining surface.		2
														Total Base/Alternate	2
60	222	West	Second	4'0 X 8'0		X		X	X				Remove sash, remove loose glazing, replace missing glazing with new compound, prime paint, repaint sash, re-rope sash, reinstall sash. Install interior storm window	Install two lift handles on lower sash,	3
61	223	West	Second	4'0 X 8'0		X	X						Remove sash, remove loose glazing, replace missing glazing with new compound, prime paint, repaint sash, re-rope sash, reinstall sash. Install interior storm window		3
62	224	West	Second	4'0 X 8'0		X	X						Remove sash, remove loose glazing, replace missing glazing with new compound, prime paint, repaint sash, re-rope sash, reinstall sash. Install interior storm window		3
63	225	West	Second	4'0 X 8'0		X	X						Remove sash, remove loose glazing, replace missing glazing with new compound, prime paint, repaint sash, re-rope sash, reinstall sash. Install interior storm window		3
64	226	West	Second	4'0 X 8'0		X		X	X				Remove sash, remove loose glazing, replace missing glazing with new compound, prime paint, repaint sash, re-rope sash, reinstall sash. Install interior storm window	Install two lift handles on lower sash,	3
														Total Base/Alternate	3



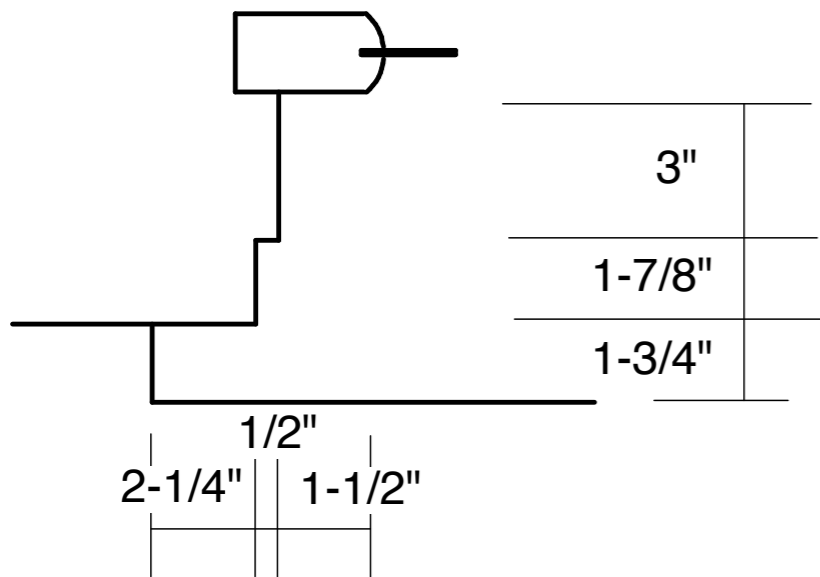
L1080874

East Door

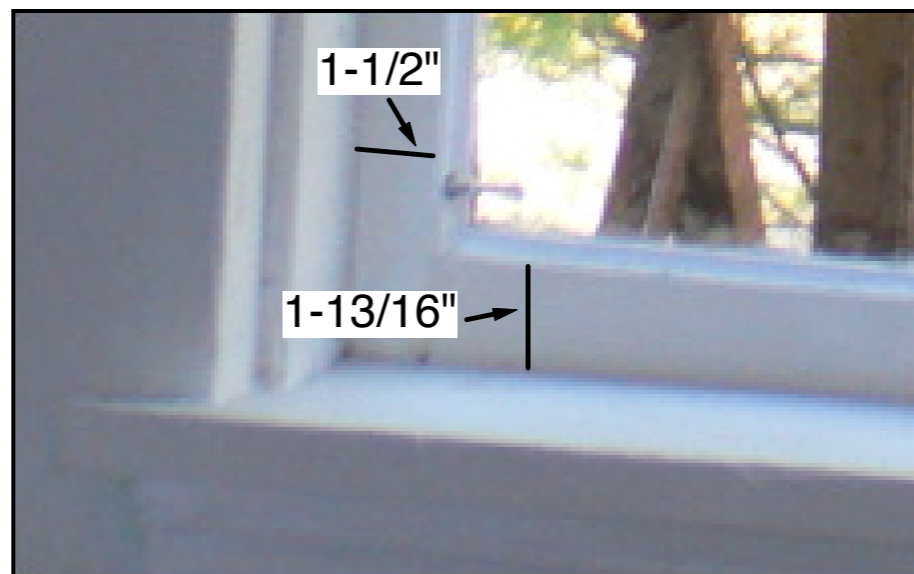


L1080872

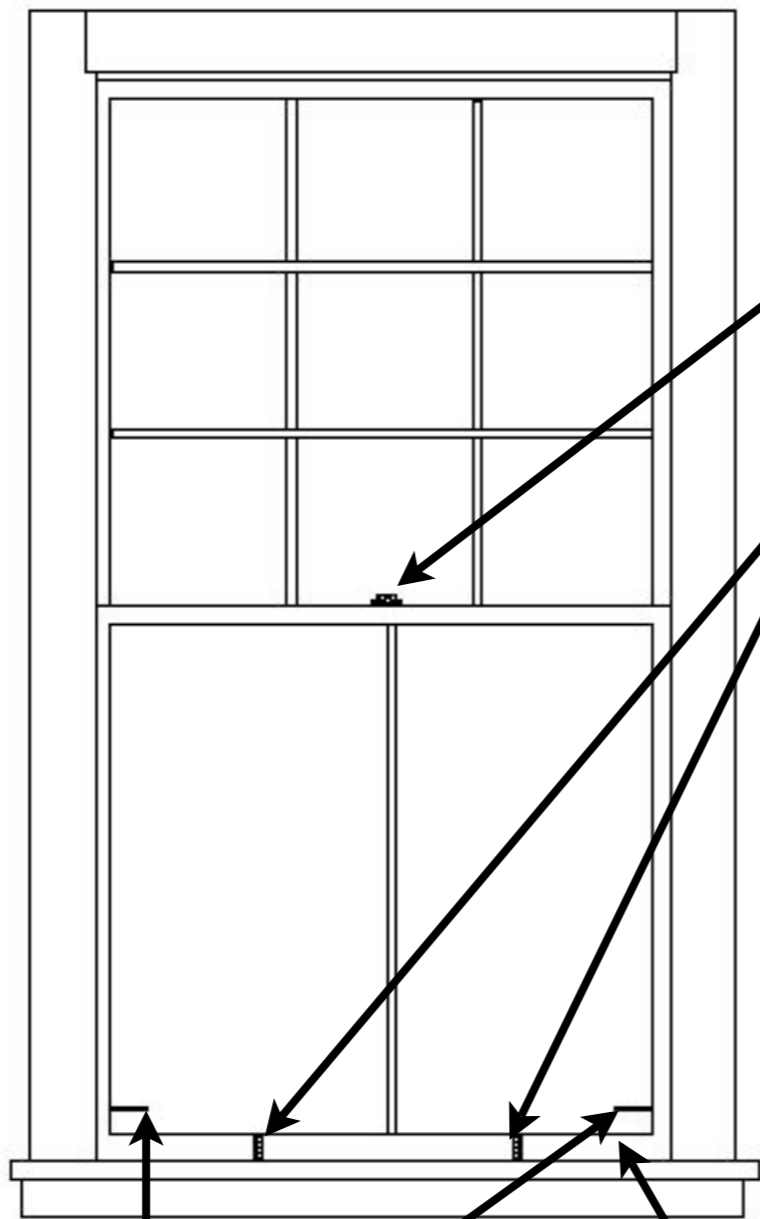
West Door



Section at Jamb

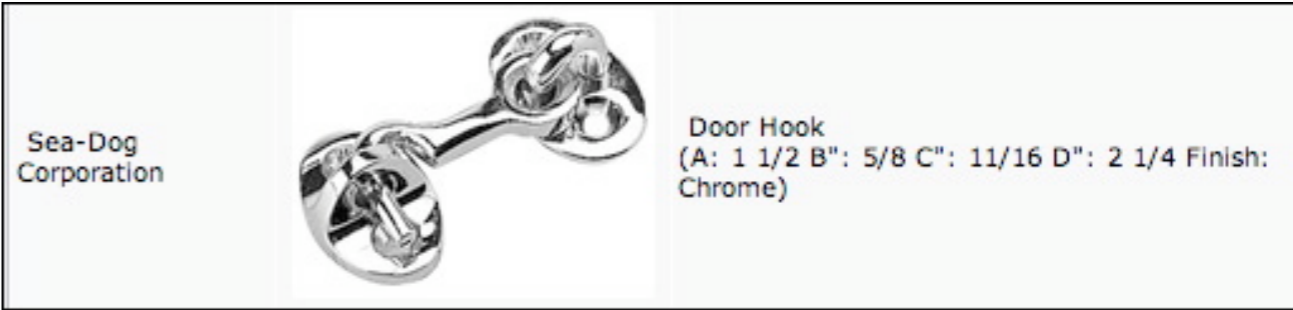
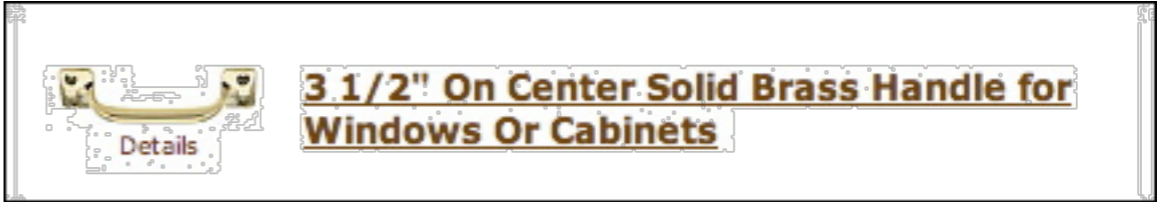


Typical Window Interior



Lock to remain

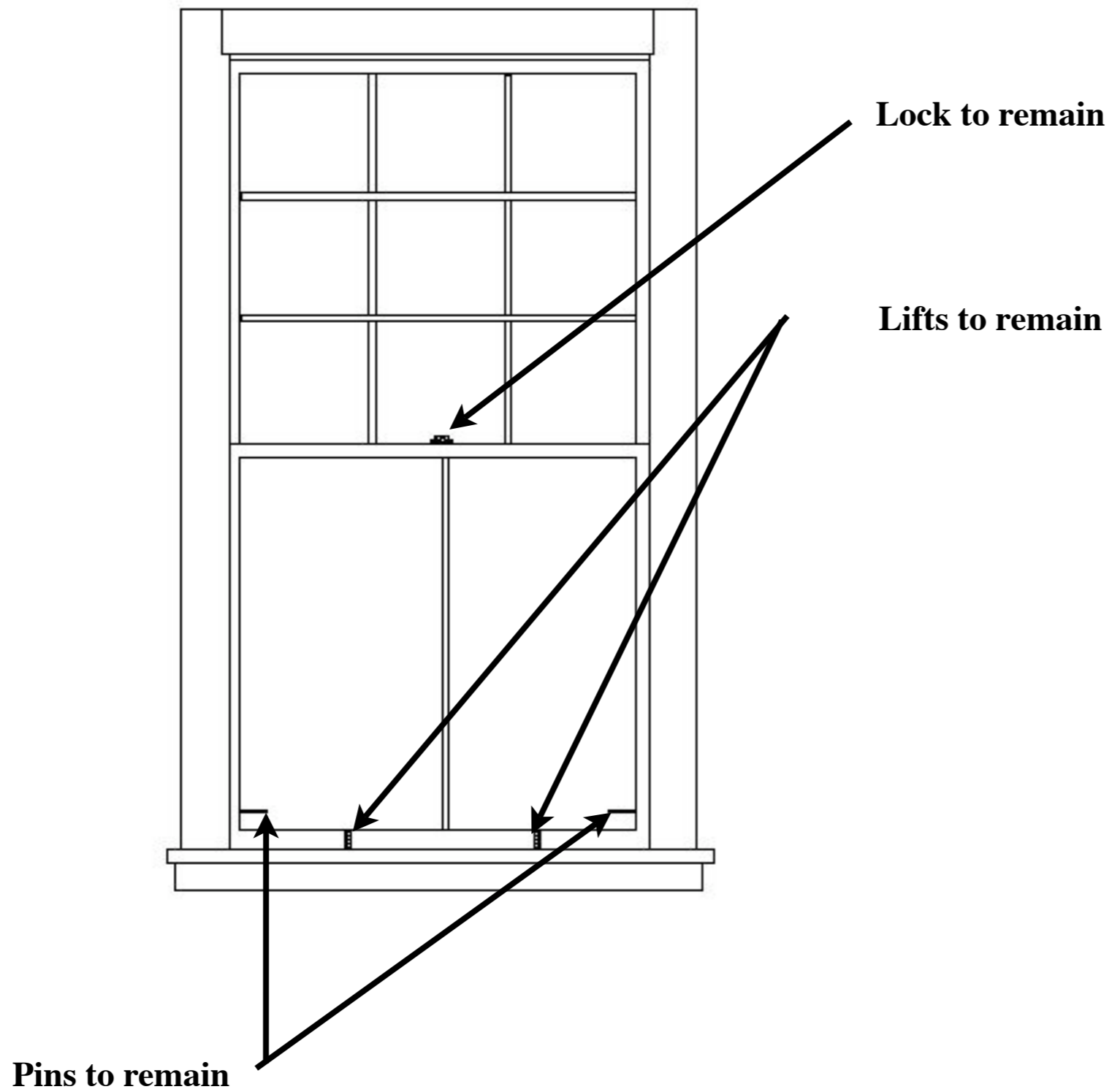
Remove lifts, fill all holes, install two new handles same location



Remove where pins exist, fill all holes

Install new latch

Typical Window Interior View, Operable Storm Window Location Only



Typical Window Interior View, All Other Windows



L1080448

West Elevation

L1080470





**North Elevation
Interior**

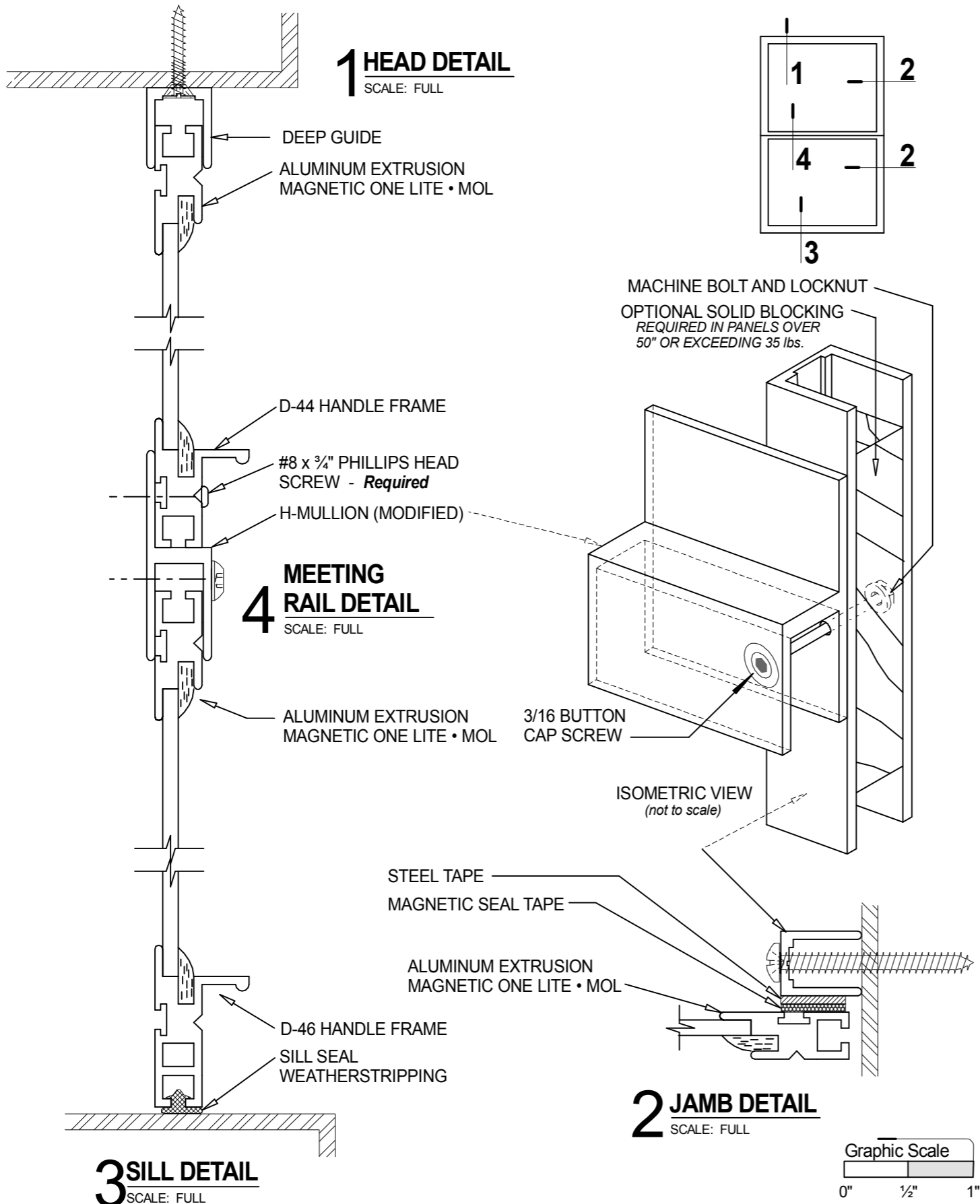
Typical size 4'0W X 8'0H



L1080472

L1080471

3



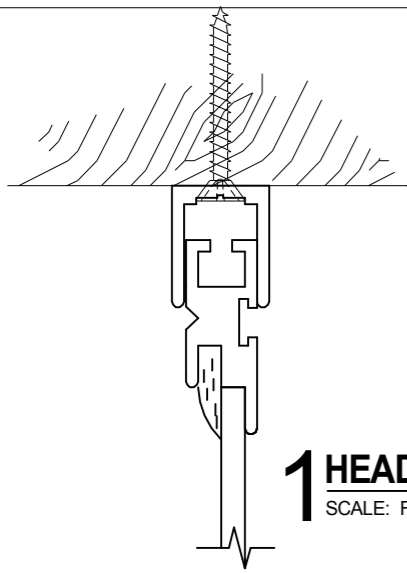
Allied Window Fixed Unit

PRODUCT
MAGNETIC ONE LITE, STACKED • MOL-ST
PERMANENT MULLION

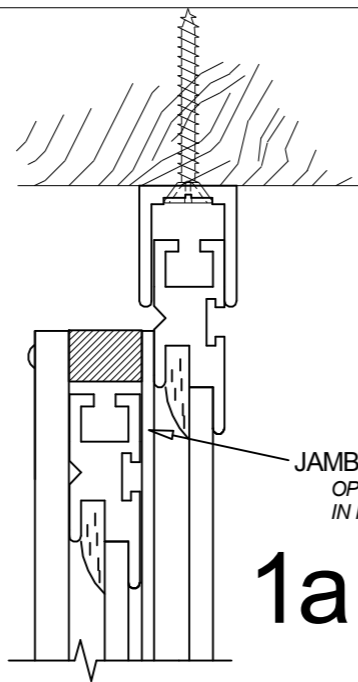
DWG. NO.
M-3

Allied Window
Performance Panels™

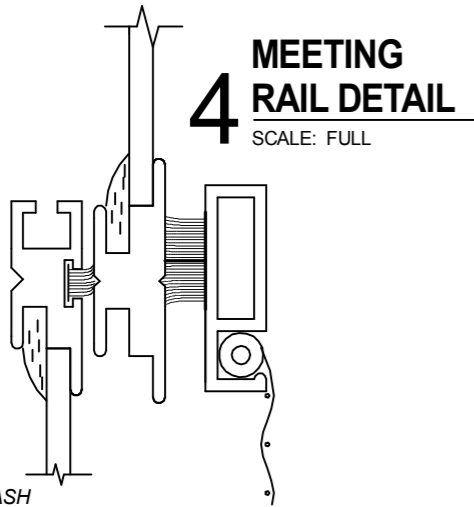
11111 CANAL ROAD • CINCINNATI, OH 45241 • PH: 800-445-5411, 513-559-1212 • FAX: 513-559-1883 • www.alliedwindow.com • info@alliedwindow.com



1 HEAD DETAIL
SCALE: FULL

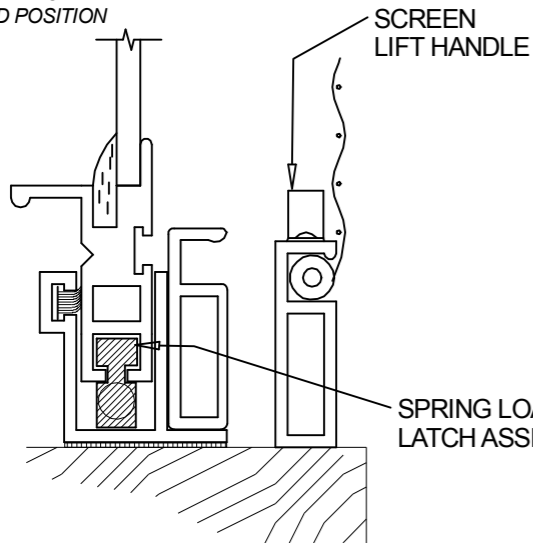


1a HEAD DETAIL
SCALE: FULL

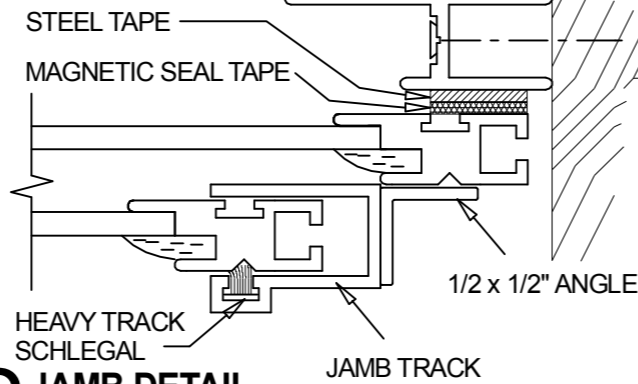


4 MEETING RAIL DETAIL
SCALE: FULL

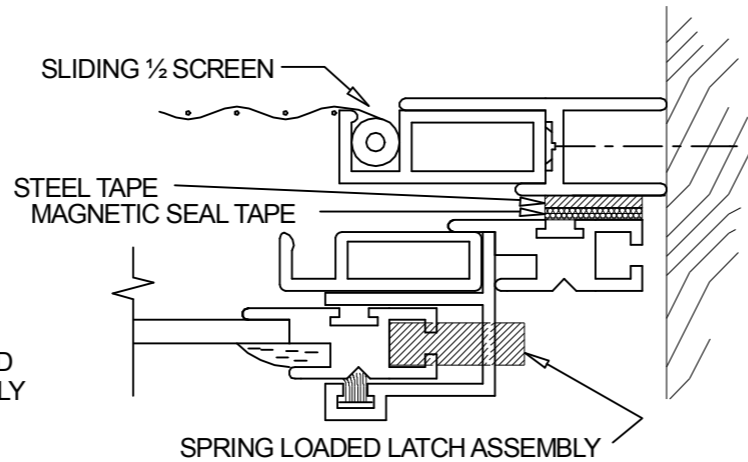
OPERATING SASH SHOWN IN FULLY CLOSED POSITION



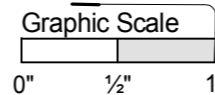
3 SILL DETAIL
SCALE: FULL



2 JAMB DETAIL
SCALE: FULL



2a JAMB DETAIL
SCALE: FULL



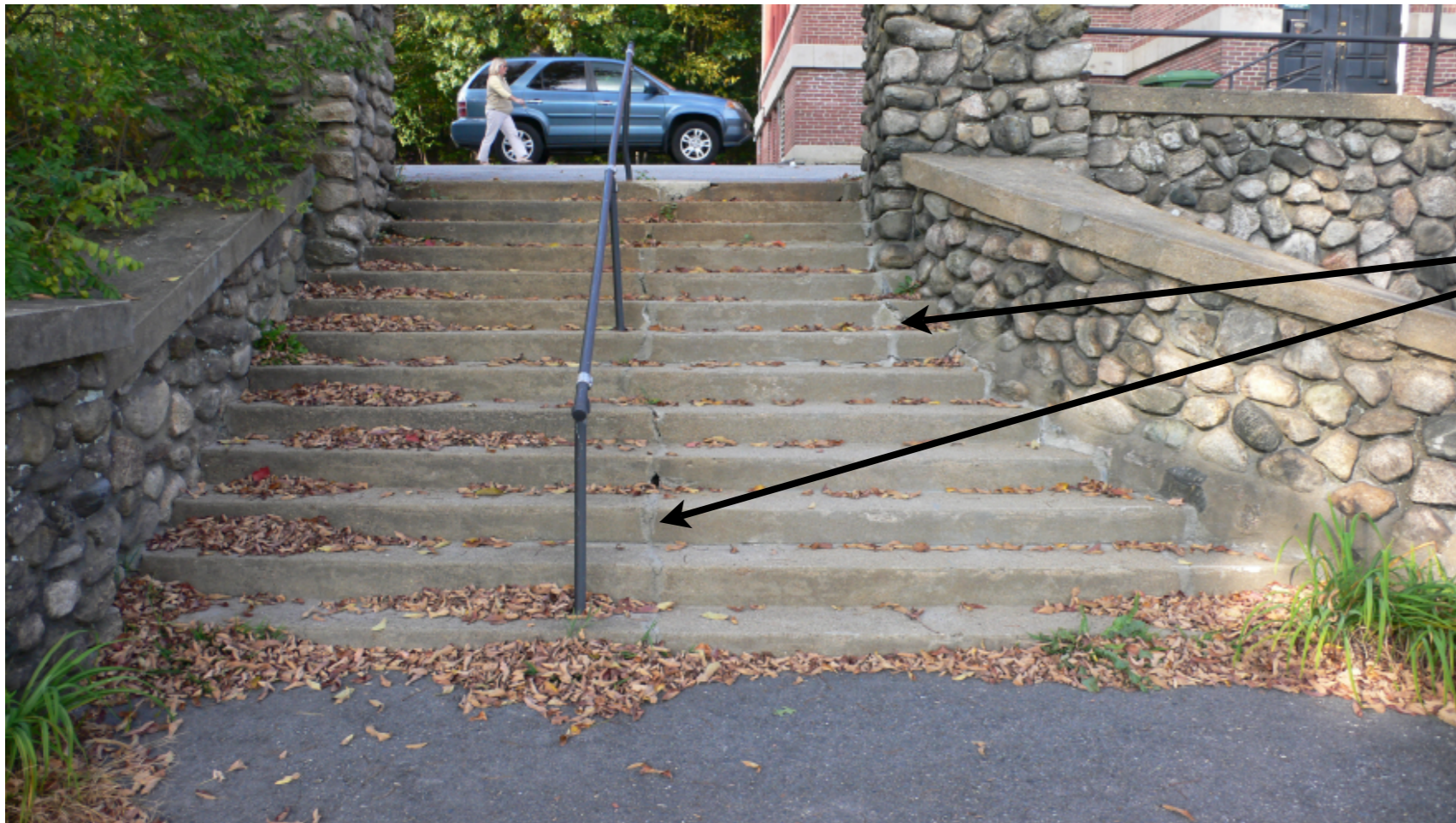
Allied Window Operable Unit

PRODUCT
MAGNETIC ONE LITE, OPERATING MOL-OP
WITH SCREEN

DWG. NO.
M-5

Allied Window
Performance Panels™

11111 CANAL ROAD • CINCINNATI, OH 45241 • PH: 800-445-5411, 513-559-1212 • FAX: 513-559-1883 • www.alliedwindow.com • info@alliedwindow.com



Repair all cracks in treads and risers with Abatron Aboweld 55-1

L1080453



Repair tread with Abatron Aboweld 55-1

Approach stair to be repaired

L1080452



L1080457

Repair all cracks in treads and risers with Abatron Aboweld 55-1

West stair to be repaired



L1080457

Repair all cracks in treads and risers with Abatron Aboweld 55-1

East stair to be repaired