

**First Congregational Church
Nantucket, MA
Exterior Analysis and Recommendations for Repairs,
Restoration and Conservation**

October 23, 2006

**DMH Enterprises, Architects
104 Federal Street
Salem, MA 01970
617-744-8202**

**All photos 10/19/2006 unless otherwise noted
c-1968 architectural drawings by Ames & Graves**

Photographs and drawings of existing conditions



East facade of church

L1030189



**East facade of church,
composite view**

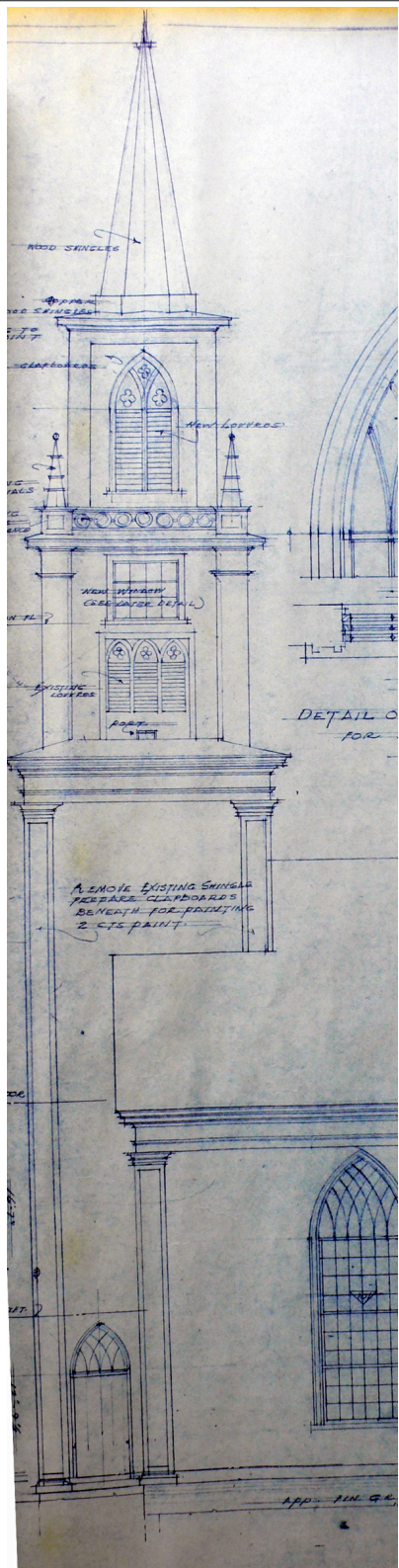
L1030188

L1030187

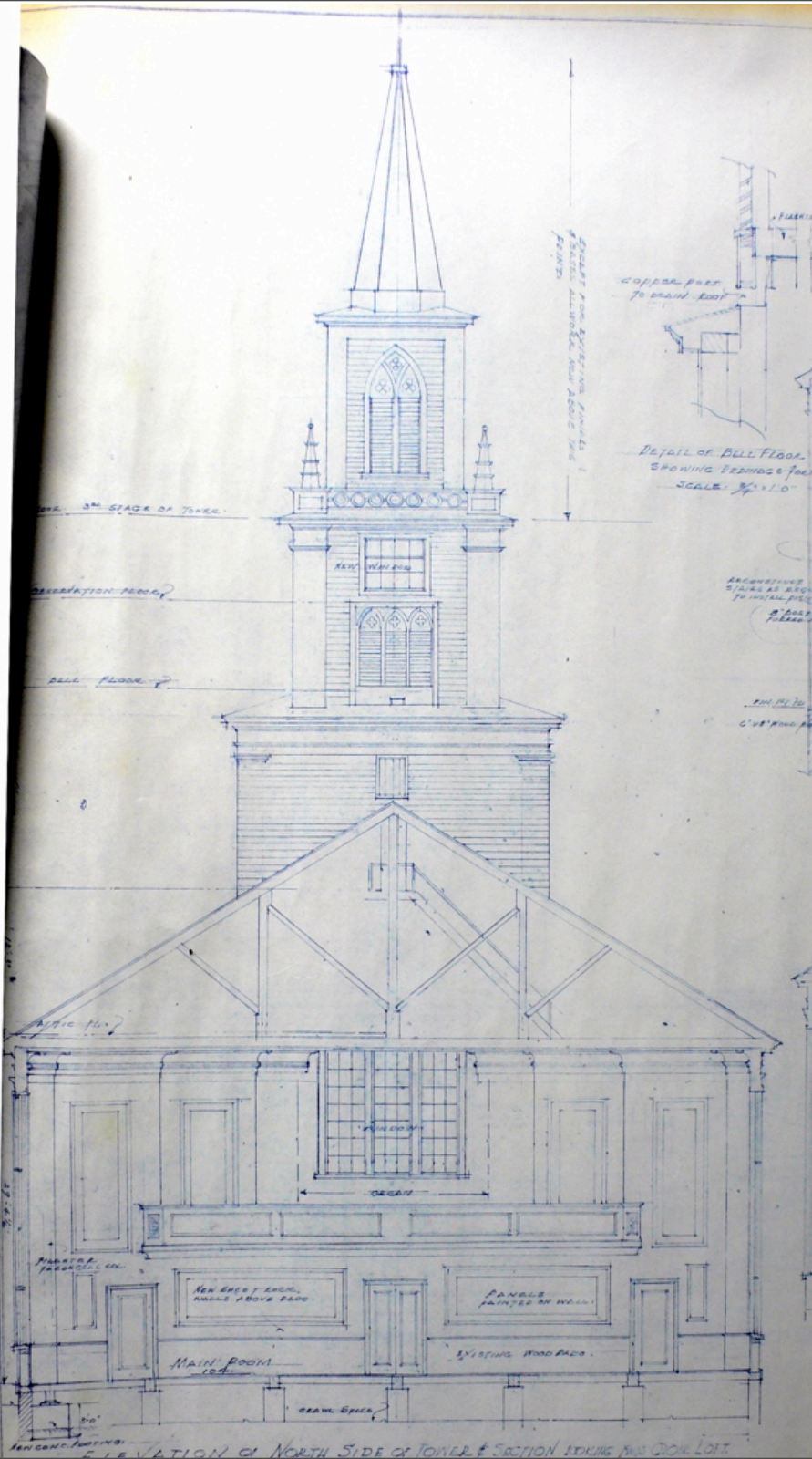


South/east facade of church

L1030185



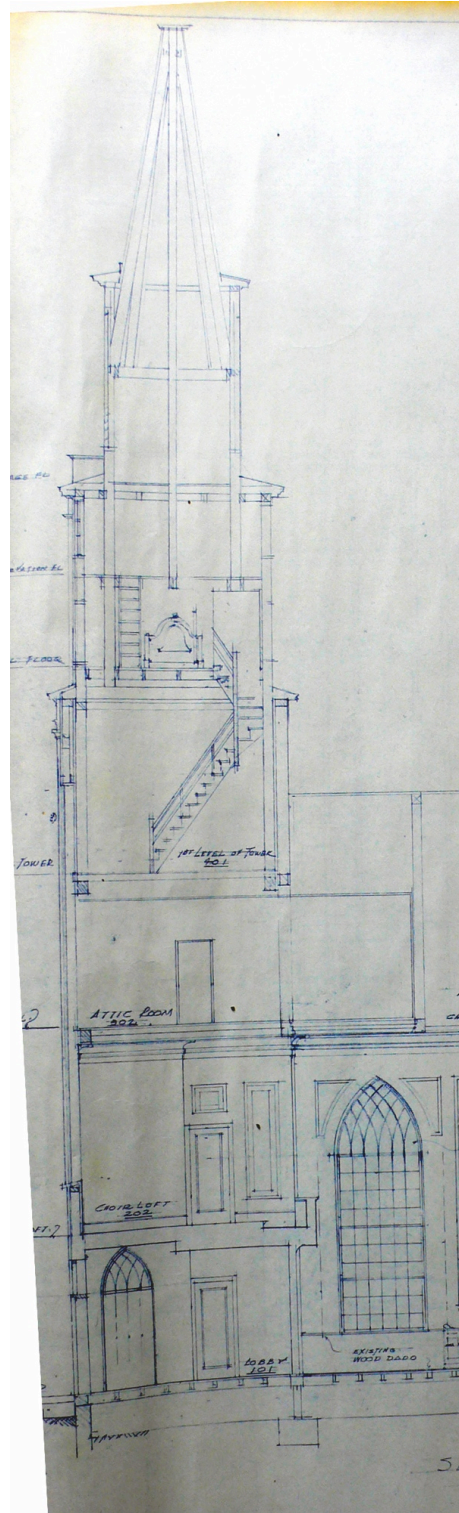
North facade of church



Drawings showing exterior and interior configuration

East facade/section of church

North facade/section of church



Photographs of moisture levels at exterior and interior locations.



L1030203

Illustrates measurement of moisture in wooden elements. Here the level is 28%+ - "off the chart". Also, meter probes are buried in rotted wood.

L1030185



L10301204

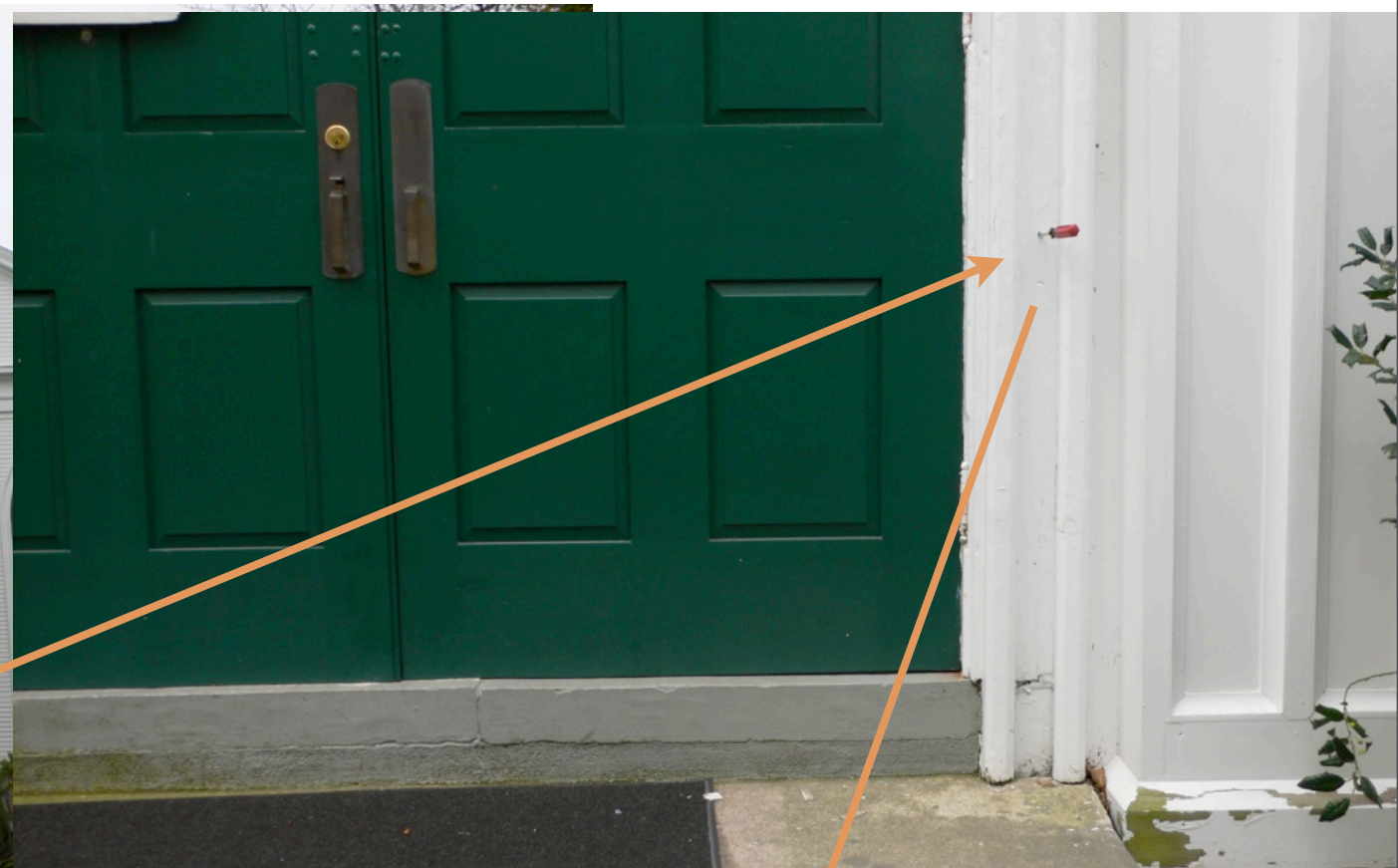
East facade of church 10



L1030185

Wood element is saturated with moisture and rotted. Here the screwdriver is partially buried in the wood.

L1030206



L1030205

East facade of church

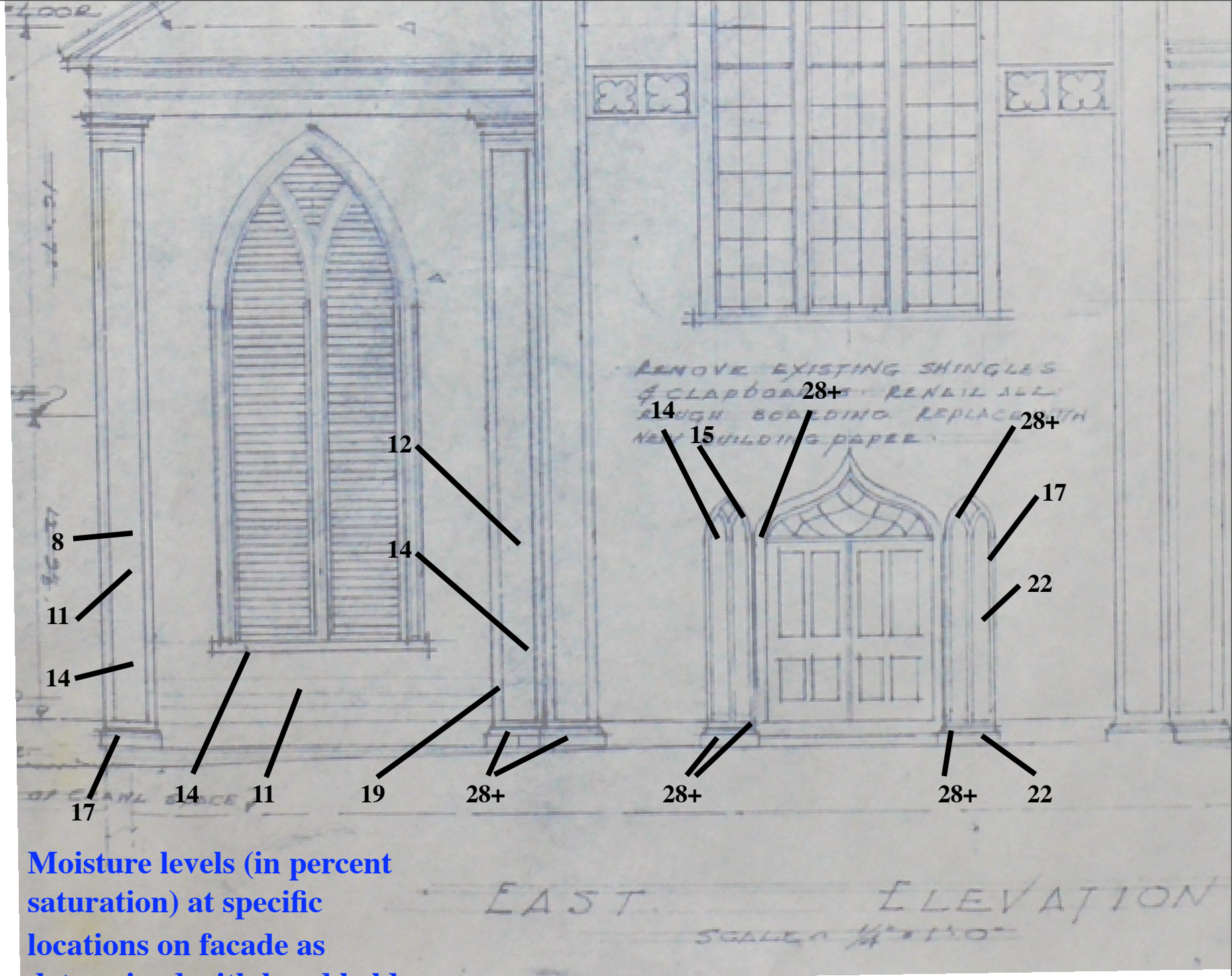


L1030213

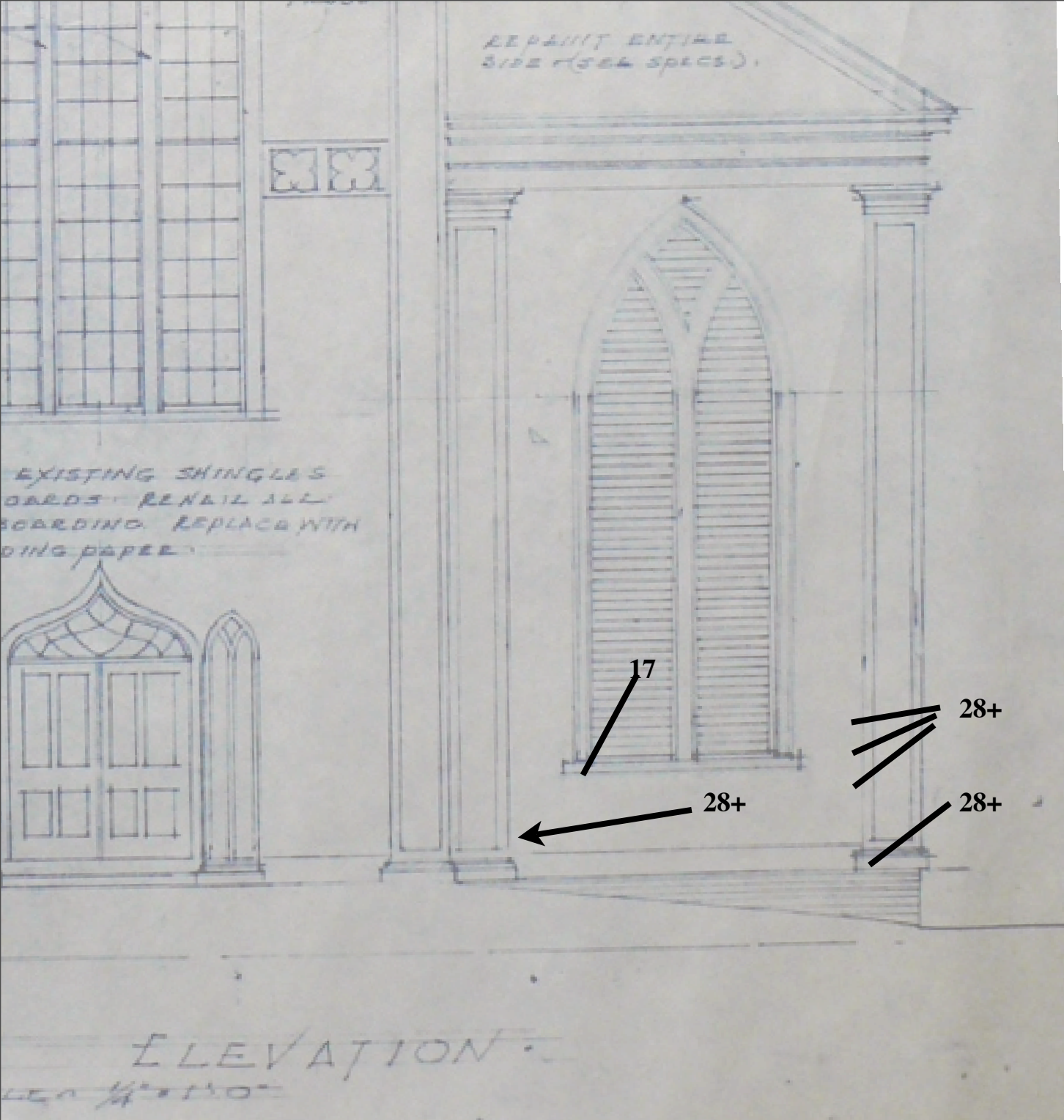
Wood element is saturated with moisture and rotted. Here the screwdriver shaft is buried in the wood.

L1030185

Location of specific moisture levels as determined with hand held moisture meter.



Moisture levels (in percent saturation) at specific locations on facade as determined with hand held moisture meter

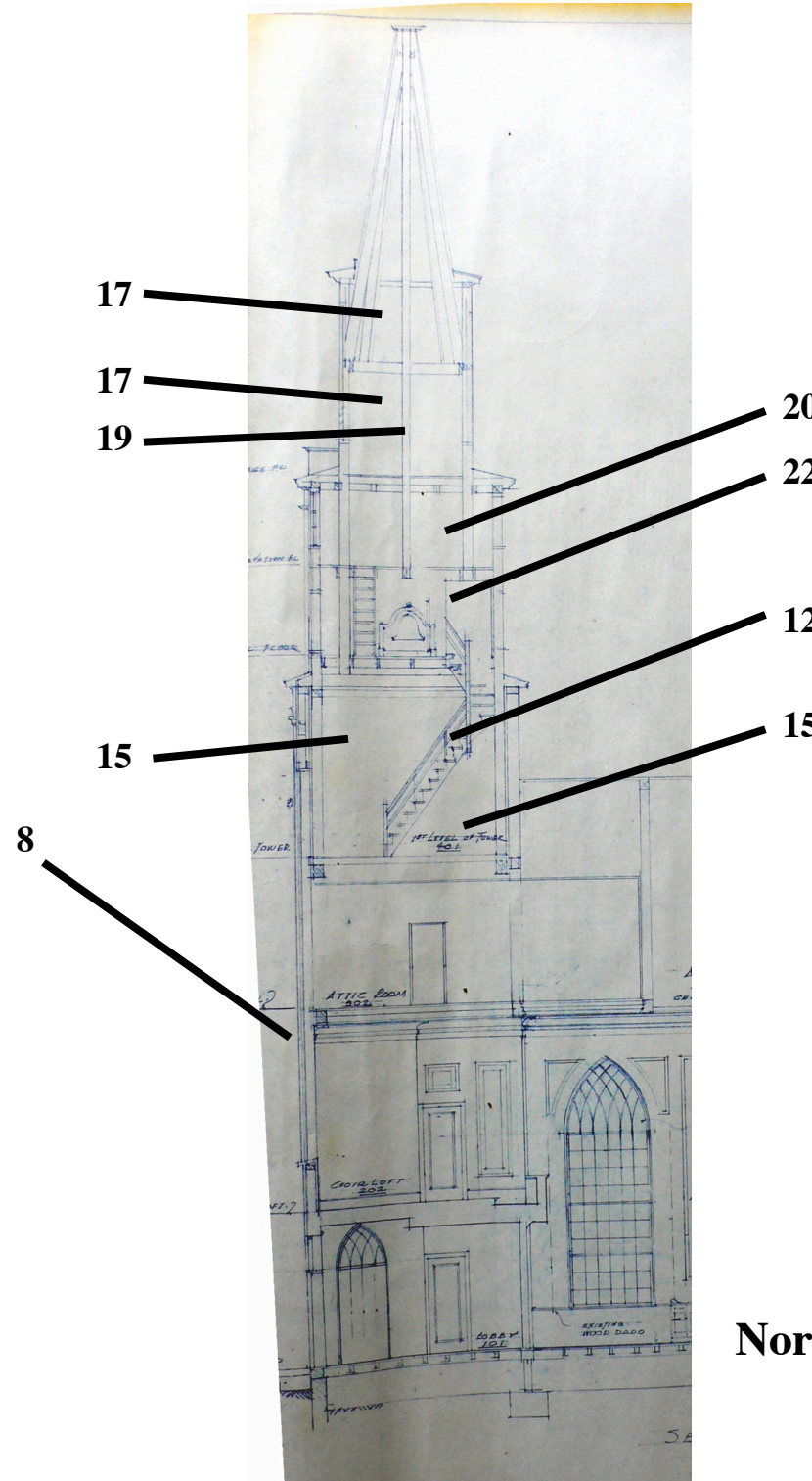


Moisture levels (in percent saturation) at specific locations on facade as determined with hand held moisture meter

East facade - partial of church

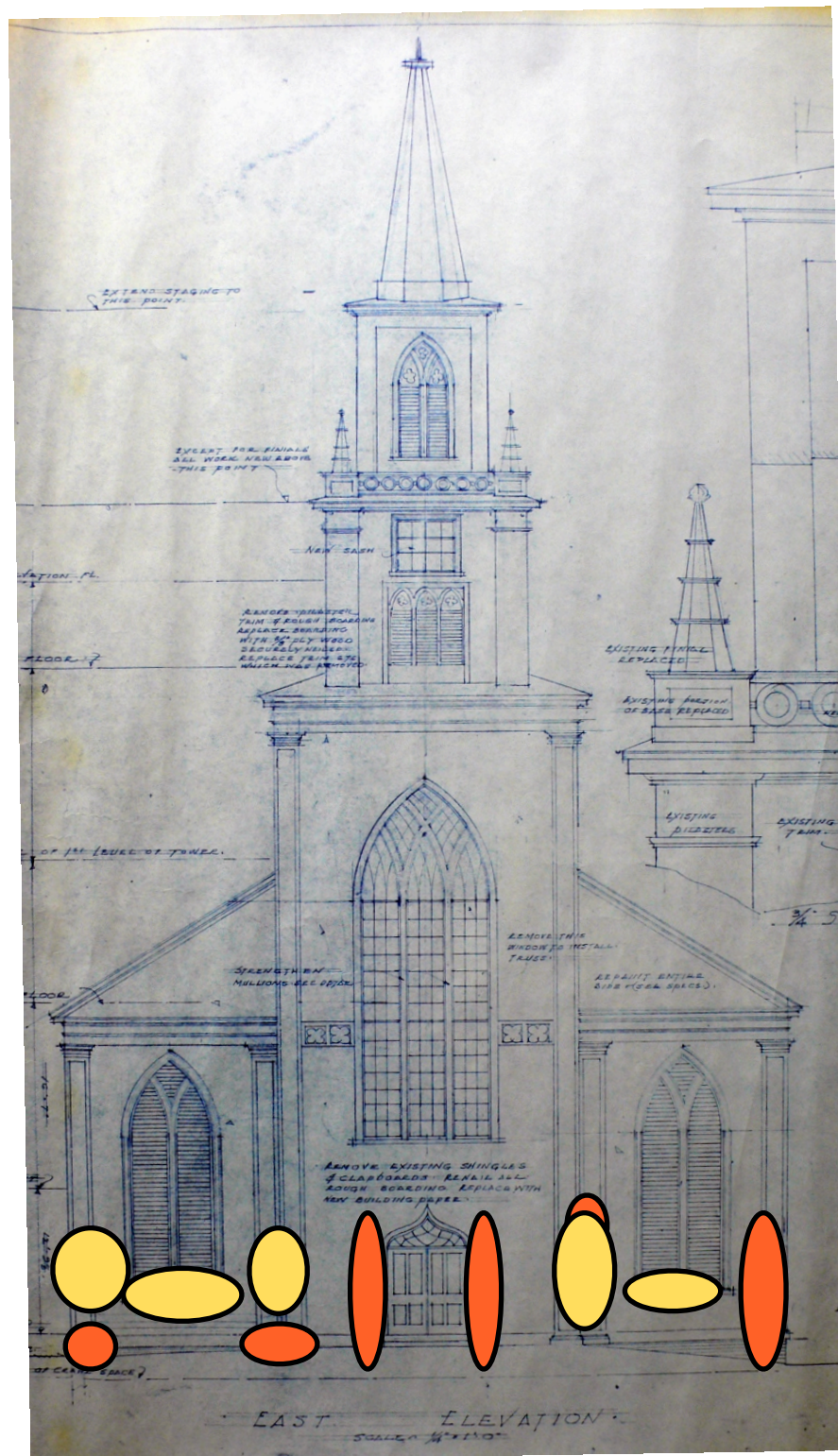
Temperature and Humidity levels were also recorded at various levels and are reported here

Temperature	Humidity
65	68%
68	63%
66	62%
66	64%
63	64%



Moisture levels (in percent saturation) at specific locations at interior framing elements and interior surface of wooden sheathing as determined with hand held moisture meter

North facade/section of church



Moisture levels as illustrated by color (red is saturation of 28%+, yellow is approaching saturation and is in the range of 15 -22%) at specific locations on facade as determined with hand held moisture meter

East facade of church

Major items to be addressed in restoration/conservation efforts at exterior of building

East facade of church

Major items to be addressed in restoration/conservation of facade

**2007 work in red
2008 work in black**



Prepare & paint upper area

Repair louvers

Repair louvers

Replace mullions, reflash heads

Reglaze sash

Replace mullions, reflash heads

Replace mullions, reflash heads



Repair louvers, reglaze sash

Repair louvers, reglaze sash

Prepare & paint lower area

L1030188

L1030187



Prepare & paint upper area

Prepare & paint lower area

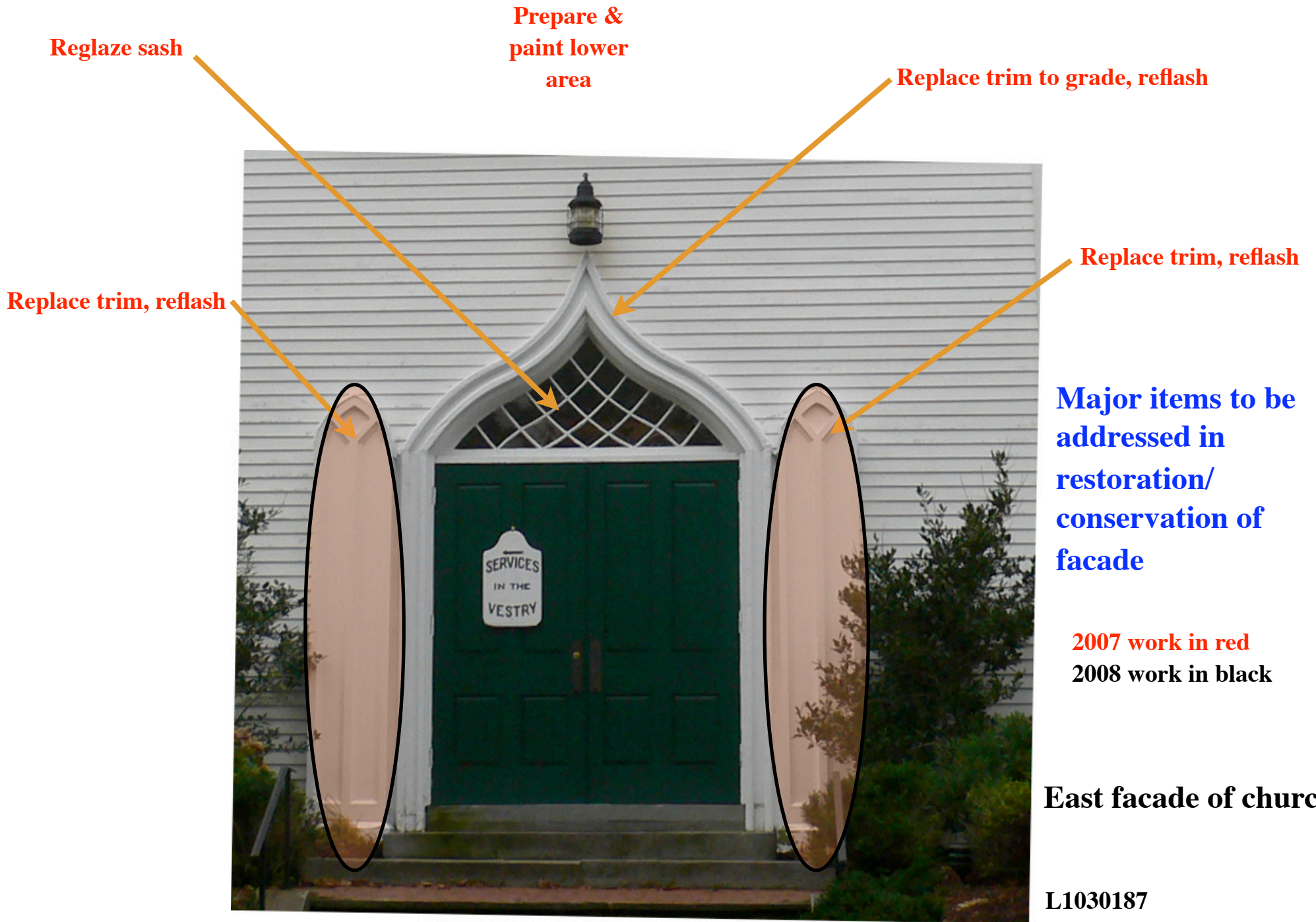
Major items to be addressed in restoration/conservation of facade

2007 work in red

2008 work in black

Replace Wooden trim each side

South/east facade of church





Prepare & paint upper area

Repair woodwork, all four facades, prepare & repaint

Repair metal roofing, all facades, prepare & paint



Major items to be addressed in restoration/conservation of facade

L1030253

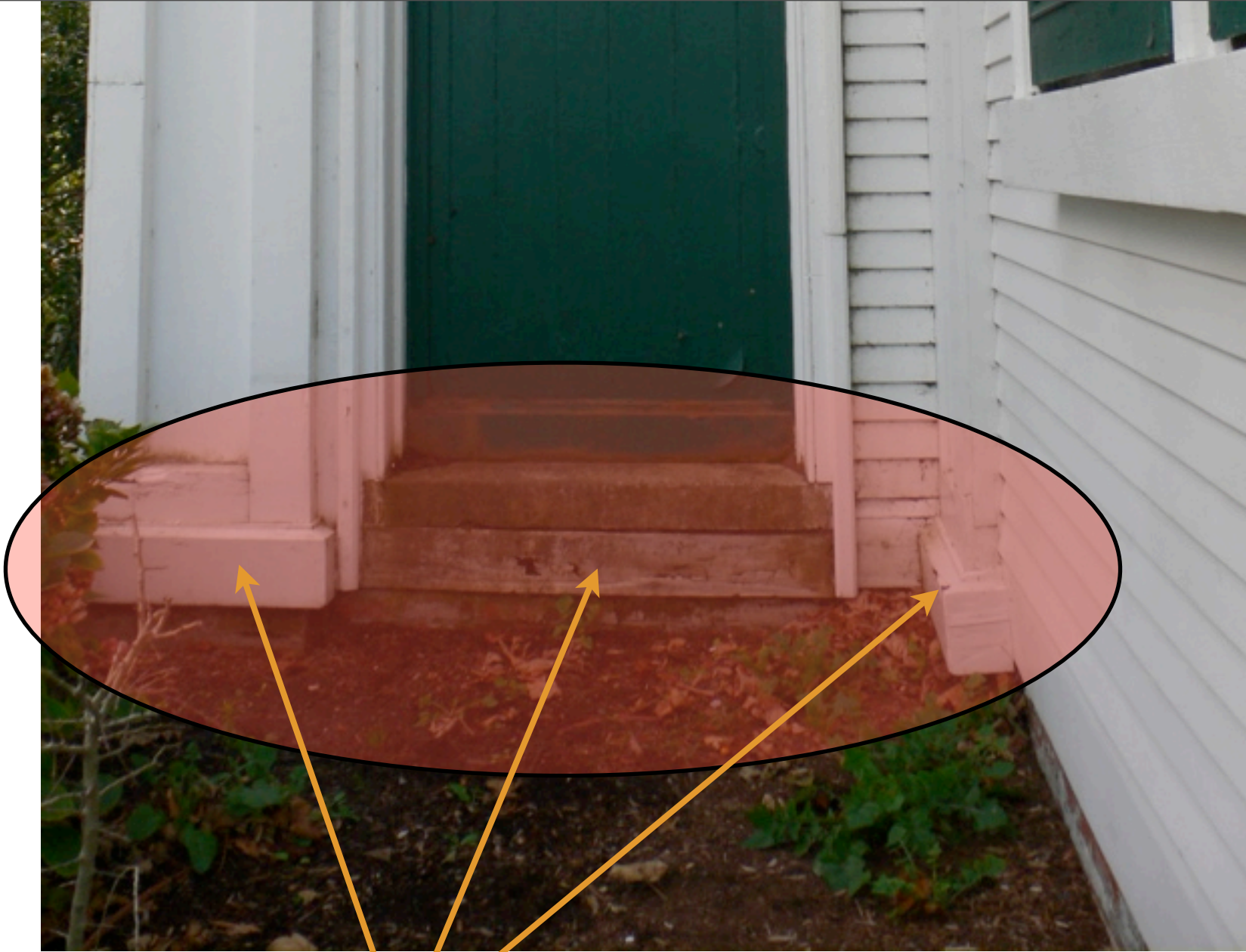
L1030186

Prepare & paint entire surface

2007 work in red

2008 work in black

South facade of church



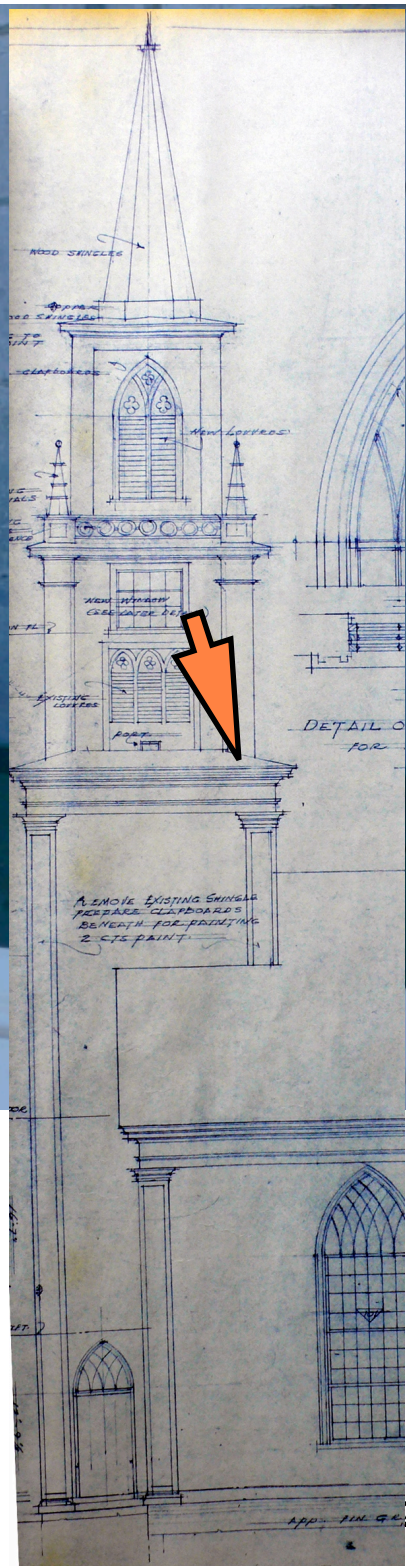
L1030220

Replace trim, reflash entire assemblies

2007 work in red
2008 work in black

**Major items to be addressed in
restoration/conservation of facade**

East facade of church



Remove all steel fasteners (typical) and replace with stainless steel units

L1030240

2007 work in red
2008 work in black

Major items to be addressed in restoration/conservation of facade

North facade of church

*****End of presentation*****