

**First Congregational Church  
Nantucket, MA  
Interior Repairs, Restoration and Conservation**

**September 12, 2007 Revised May 27, 2008**

**DMH Enterprises, Architects  
104 Federal Street  
Salem, MA 01970  
617-745-2172**

**Donald Mroz, Ph.D.  
Waves of Change Partnership  
268 Madaket Rd,  
Nantucket, MA 02554  
508-228-5398**

**According to the CPC submission of 10/29/2007, the walls and ceilings were decorated with trompe l’oeil painting. The submission identified the redecoration as “Major restoration, redecoration of interior with tromp l’oeil, and original ceiling reproduced.” The team was identified as W. Philip Graves, architect, Howard Jellome, contractor, and Artist Walter Sampson, who presumably was the painting contractor. The work was reportedly funded in part by “Nantucket Historical Trust assisted along with others.”**

**The following pages depict the images available at the HABS (Historic American Buildings Survey) web site**

[The Library of Congress](#)



**Historic American Buildings Survey/Historic American Engineering Record**



drawings



b&w photos



data pages

(If noted, names of photographers and date of creation are found in the photo caption pages.)







First Congregational Church, 62 Centre Street, Nantucket, Nantucket County, MA

Photographs 1 through 12 of 19

[NEXT GROUP](#)

*For a larger reference image, click on the picture or text.*

[Back to catalog record](#) | [Built in America Home Page](#)

 <p><a href="#">1. Historic American Buildings Survey Cortlandt V. D. Hubbard, Photographer July 1966 EAST ELEVATION HABS MASS.10-NANT.26-1</a></p>	 <p><a href="#">2. Historic American Buildings Survey Cortlandt V. D. Hubbard, Photographer October 1966 EAST ELEVATION HABS MASS.10-NANT.26-2</a></p>	 <p><a href="#">3. Historic American Buildings Survey Cortlandt V. D. Hubbard, Photographer July 1966 NORTH VESTRY AND CHURCH, SOUTHWEST ELEVATIONS HABS MASS.10-NANT.26-3</a></p>	 <p><a href="#">4. Historic American Buildings Survey DETAIL OF SOUTH ELEVATION Jack E. Boucher, Photographer Nov. 1968 HABS MASS.10-NANT.26-4</a></p>
 <p><a href="#">5. Historic American Buildings Survey Jack E. Boucher, Photographer November 1968 DETAIL, SOUTHEAST CORNER OF CHURCH AND TOWER HABS MASS.10-NANT.26-5</a></p>	 <p><a href="#">6. Historic American Buildings Survey Jack E. Boucher, Photographer August 1970 EAST ELEVATION, AFTER RESTORATION HABS MASS.10-NANT.26-6</a></p>	 <p><a href="#">7. Historic American Buildings Survey Cortlandt V. D. Hubbard, Photographer July 1966 INTERIOR, EAST END, BEFORE RESTORATION HABS MASS.10-NANT.26-7</a></p>	 <p><a href="#">8. Historic American Buildings Survey Cortlandt V. D. Hubbard, Photographer July 1966 INTERIOR, WEST END, BEFORE RESTORATION HABS MASS.10-NANT.26-8</a></p>
 <p><a href="#">9. Historic American Buildings Survey Cortlandt V. D. Hubbard, Photographer July 1966 VESTIBULE, BEFORE RESTORATION HABS MASS.10-NANT.26-9</a></p>	 <p><a href="#">10. Historic American Buildings Survey Jack E. Boucher, Photographer August 1970 INTERIOR, TROMPE L'OEIL PAINTING ON WEST WALL HABS MASS.10-NANT.26-10</a></p>	 <p><a href="#">11. Historic American Buildings Survey Jack E. Boucher, Photographer August 1970 INTERIOR, EAST END, AFTER RESTORATION HABS MASS.10-NANT.26-11</a></p>	 <p><a href="#">12. Historic American Buildings Survey Jack E. Boucher, Photographer August 1970 INTERIOR, TROMPE L'OEIL PAINTING ON CEILING AND WEST WALL HABS MASS.10-NANT.26-12</a></p>

[The Library of Congress](#)



## Historic American Buildings Survey/Historic American Engineering Record



drawings



b&w photos



data pages

(If noted, names of photographers and date of creation are found in the photo caption pages.)

First Congregational Church, 62 Centre Street, Nantucket, Nantucket County, MA

Photographs 13 through 19 of 19

[PREV GROUP](#)

*For a larger reference image, click on the picture or text.*

[Back to catalog record](#) | [Built in America Home Page](#)



[13. Historic American Buildings Survey Jack E. Boucher, Photographer August 1970 INTERIOR, TROMPE L'OEIL PAINTING HABS MASS.10-NANT.26-13](#)



[14. Historic American Buildings Survey Jack E. Boucher, Photographer August 1970 VESTIBULE, AFTER RESTORATION HABS MASS.10-NANT.26-14](#)



[15. Historic American Buildings Survey Jack E. Boucher, Photographer August 1970 VESTIBULE, AFTER RESTORATION HABS MASS.10-NANT.26-15](#)



[16. Historic American Buildings Survey COPY OF STEREOPTICON BY J. FREEMAN, C. 1885, OF WEST WALL WITH ORIGINAL TROMPE L'OEIL PAINTING HABS MASS.10-NANT.26-16](#)



[17. Historic American Buildings Survey PHOTOCOPY OF PHOTOGRAPH, c. 1885 HABS MASS.10-NANT.26-17](#)



[18. Historic American Buildings Survey COPY OF STEREOPTICON BY J. FREEMAN, C. 1885. HABS MASS.10-NANT.26-18](#)



[19. Historic American Buildings Survey PHOTOCOPY OF AN UNSIGNED DRAWING OWNED BY THE FIRST CONGREGATIONAL CHURCH, c. 1834 HABS MASS.10-NANT.26-19](#)

[Back to catalog record](#) | [Built in America Home Page](#)

Photographs 13 through 19 of 19

[PREV GROUP](#)



1885, Sanctuary, looking west

16. Historic American  
Buildings Survey COPY OF  
STEREOPTICON BY J.  
FREEMAN, C. 1885, OF  
WEST WALL WITH  
ORIGINAL TROMPE  
L'OEIL PAINTING  
HABS MASS,10-NANT,26-16



**7. Historic American  
Buildings Survey Cortlandt V.  
D. Hubbard, Photographer  
July 1966 INTERIOR, EAST  
END, BEFORE  
RESTORATION  
HABS MASS,10-NANT,26-7**

**1966, Sanctuary, looking west**

074346pv.jpg



**7. Historic American  
Buildings Survey Cortlandt V.  
D. Hubbard, Photographer  
July 1966 INTERIOR, EAST  
END, BEFORE  
RESTORATION  
HABS MASS,10-NANT,26-7**

**1966, Sanctuary, looking west**

074347pu.jpg

MASS-902



**9. Historic American  
Buildings Survey Cortlandt V.  
D. Hubbard, Photographer  
July 1966 VESTIBULE,  
BEFORE RESTORATION  
HABS MASS,10-NANT,26-9**

074348pu.jpg

**1966, Vestibule, looking north**



**14. Historic American  
Buildings Survey Jack E.  
Boucher, Photographer  
August 1970 VESTIBULE,  
AFTER RESTORATION  
HABS MASS,10-NANT,26-14**

074353pu.jpg

**1970, Vestibule, looking north**



Church records indicate that the interior was painted in the trompe l'oeil manner in 1970, Artist Walter Sampson is recorded in the data and was presumably the artist who painted the interior. The c-1885 stereopticon by J. Freeman looks as if it was used for reference,

10. Historic American Buildings Survey Jack E. Boucher, Photographer August 1970 INTERIOR, TROMPE L'OEIL PAINTING ON WEST WALL HABS MASS,10-NANT,26-10

074349pu.jpg

1970, Sanctuary, looking south west



HABS  
NO. MASS-902-

**13. Historic American  
Buildings Survey Jack E.  
Boucher, Photographer  
August 1970 INTERIOR,  
TROMPE L'OEIL  
PAINTING  
HABS MASS,10-NANT,26-13**

074352pu.jpg

**1970, Sanctuary, looking south west**



074351pu.jpg

1970, Sanctuary, looking south west

12. Historic American Buildings Survey Jack E. Boucher, Photographer August 1970 INTERIOR, TROMPE L'OEIL PAINTING ON CEILING AND WEST WALL HABS MASS,10-NANT,26-12

074355pu.jpg



16. Historic American Buildings Survey COPY OF STEREOPTICON BY J. FREEMAN, C. 1885, OF WEST WALL WITH ORIGINAL TROMPE L'OEIL PAINTING HABS MASS,10-NANT,26-16



**11. Historic American  
Buildings Survey Jack E.  
Boucher, Photographer  
August 1970 INTERIOR,  
EAST END, AFTER  
RESTORATION  
HABS MASS,10-NANT,26-11**

074350pu.jpg

**1970, Sanctuary, looking east**

**The following pages depict existing conditions as of 2007 and recommendations for conservation/restoration.**

**Trompe l'oeil to be repainted or conserved, ceiling and walls**

**Appropriate handrails to be added to pulpit area**

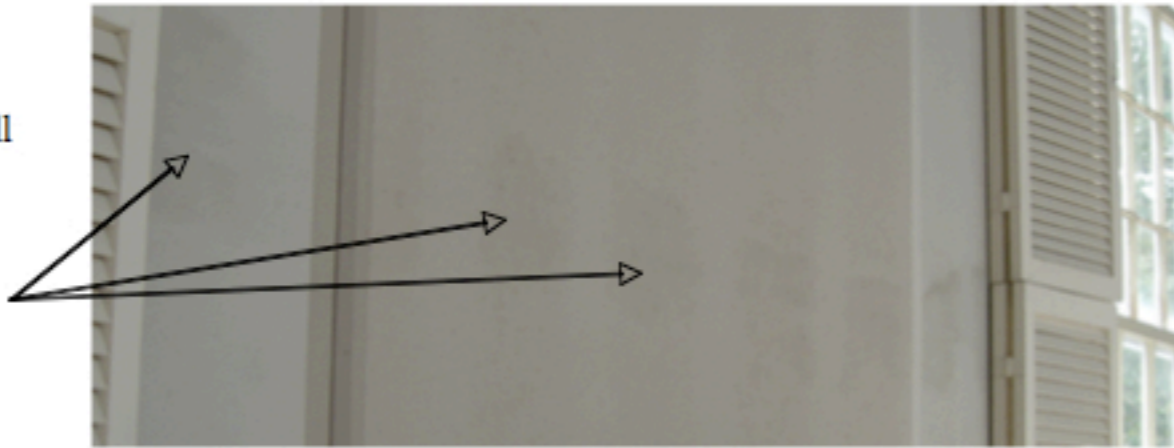


L1030232

**Sanctuary, looking west**

First Congregational Summer Church  
Interior Pictures

Interior Wall  
Mold and  
discolored



Front  
Inside  
Church



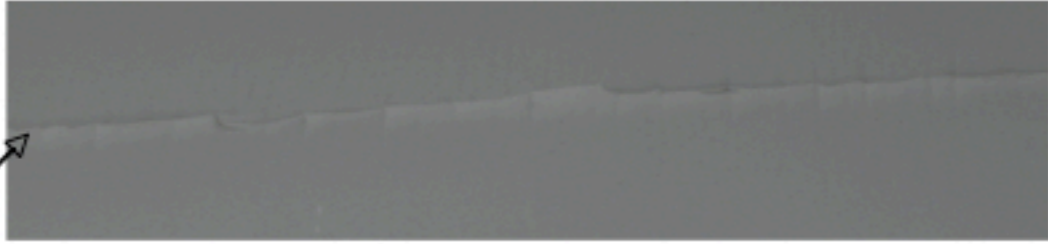
**Detail of walls and decorative trompe l'oeil to be repainted or conserved.**

Interior Cracks and Peeling



Morz091107.003

First Congregational Summer Church  
Interior Pictures



Interior Cracks and Peeling



Mold

**Detail of walls and  
wooden paneling to be  
repainted or conserved.**

Morz091107.002

First Congregational Summer Church  
Interior Pictures  
(Ceiling)



Ceiling behind  
Organ in Summer  
Church



Ceiling cracked and peeling

Window behind Organ facing  
Center Street



**Detail of sanctuary  
plaster rosette and ceiling  
plaster behind organ to  
be repaired.**

Morz091107.001

**Interior of windows to be repaired and repainted**



L1030184

**Sanctuary, looking west**

DSCN0570

**Detail of window sash and frame deterioration at interior of sanctuary to be repaired and repainted.**



DSCN0574

DSCN0573

DSCN0572

**Narthex plaster wall and ceilings to be repaired and repainted**



L1030211

**Narthex, looking east**



L1050475



L1030220

**Two exterior side doors to be repaired and panic hardware installed**

**Exterior, south and north facades**



L1030233

**Proper lighting to be installed in stair  
areas of tower where public has access**

**Tower interior, typical**