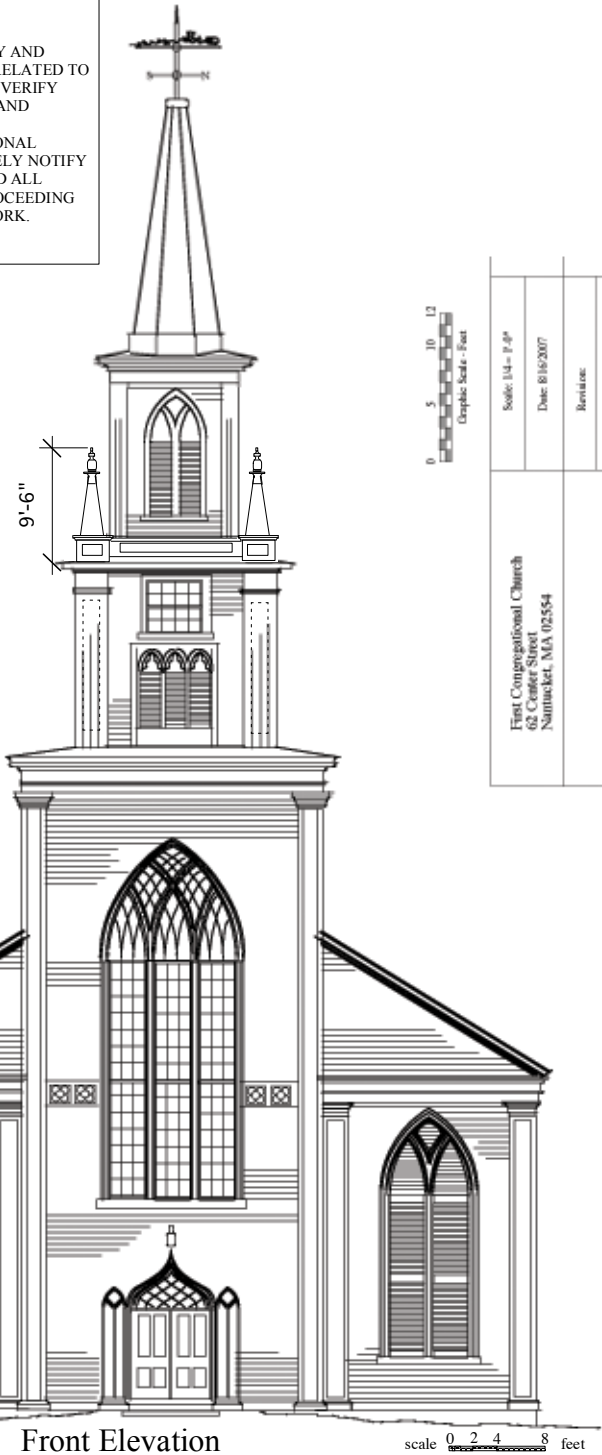


NOTE:

CONTRACTOR SHALL VERIFY AND COORDINATE DIMENSIONS RELATED TO THIS PROJECT, SHALL FIELD VERIFY ALL EXISTING CONDITIONS AND DIMENSIONS AND SHALL BE RESPONSIBLE FOR DIMENSIONAL COORDINATION. IMMEDIATELY NOTIFY THE ARCHITECT OF ANY AND ALL DISCREPANCIES BEFORE PROCEEDING WITH THAT PART OF THE WORK.



Front Elevation

scale 0 2 4 8 feet

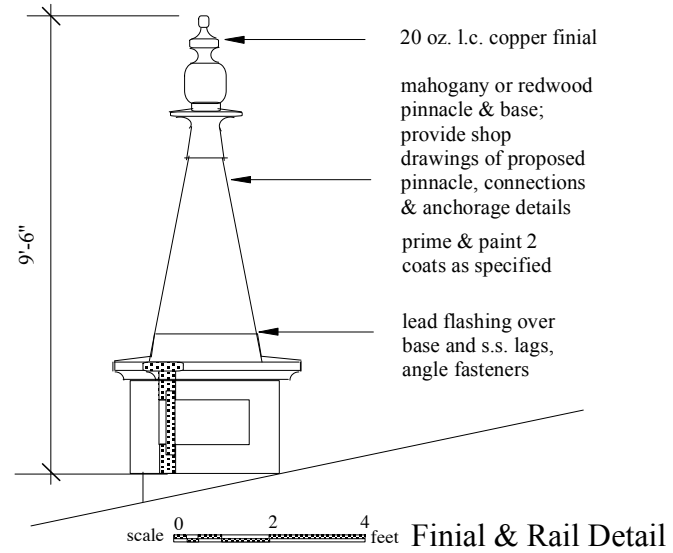


Scale: 1/4" = 1'-0"
Date: 8/16/2007
Revises:
Drawn: DMH
First Congregational Church 62 Center Street Nantucket, MA 02554



Pinnacle & Railing Detail

scale 0 2 4 feet

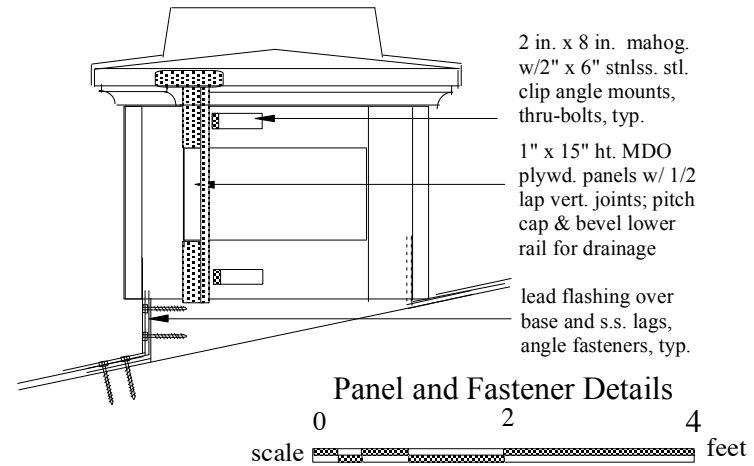


20 oz. l.c. copper finial

mahogany or redwood
pinnacle & base;
provide shop
drawings of proposed
pinnacle, connections
& anchorage details
prime & paint 2
coats as specified

lead flashing over
base and s.s. lags,
angle fasteners

Finial & Rail Detail



2 in. x 8 in. mahog.
w/2" x 6" stnlss. stl.
clip angle mounts,
thru-bolts, typ.
1" x 15" ht. MDO
plywd. panels w/ 1/2
lap vert. joints; pitch
cap & bevel lower
rail for drainage

lead flashing over
base and s.s. lags,
angle fasteners, typ.

Panel and Fastener Details

scale 0 2 4 feet

Client:
First
Congregational
Church,
Nantucket, MA

Project:
First
Congregational
Church,
Nantucket, MA

Frederic C.
Detwiller

Architect &
Preservation
Planner

302 Central St.
Georgetown,
Massachusetts
01833

Tel. 978-352-2819
or 617-640-4935
e-mail:
detwiller@rcn.com

date: 6/10/2008

scale: as noted

Dwg. Title
Parapet and
Pinnacle
Details

Dwg. No. A1



NEW
ENGLAND
LANDMARKS