

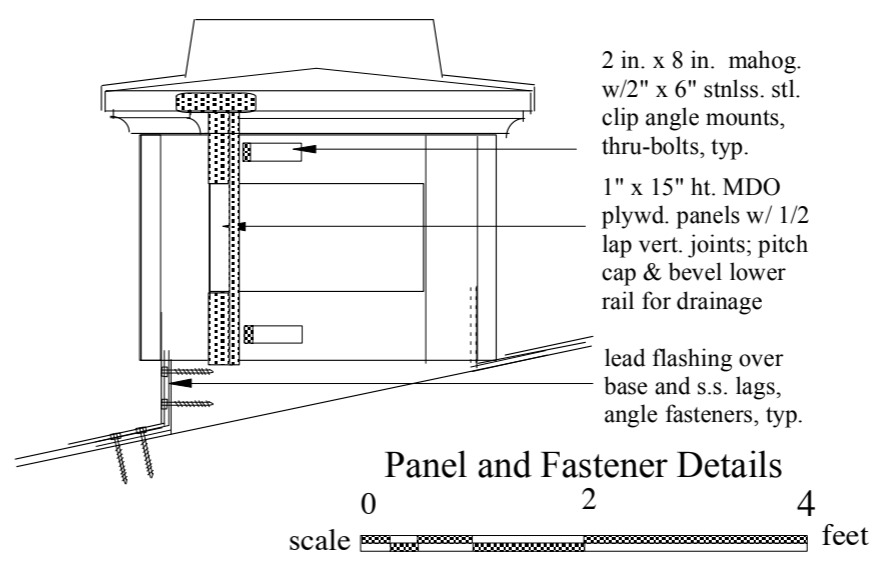
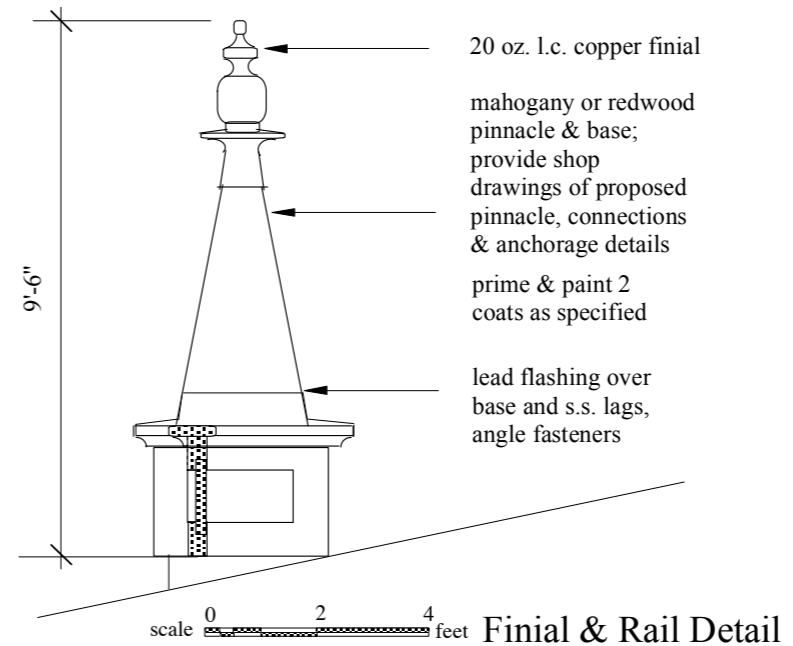
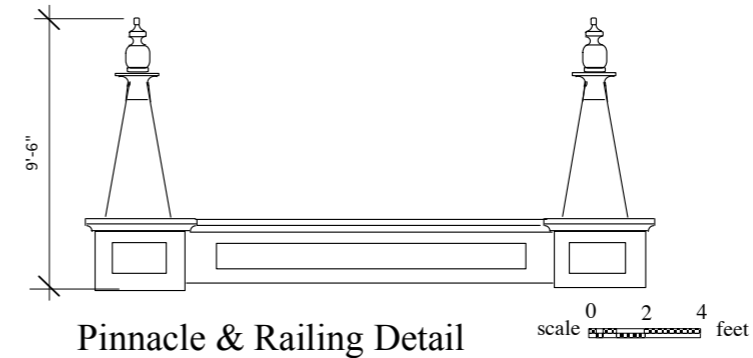
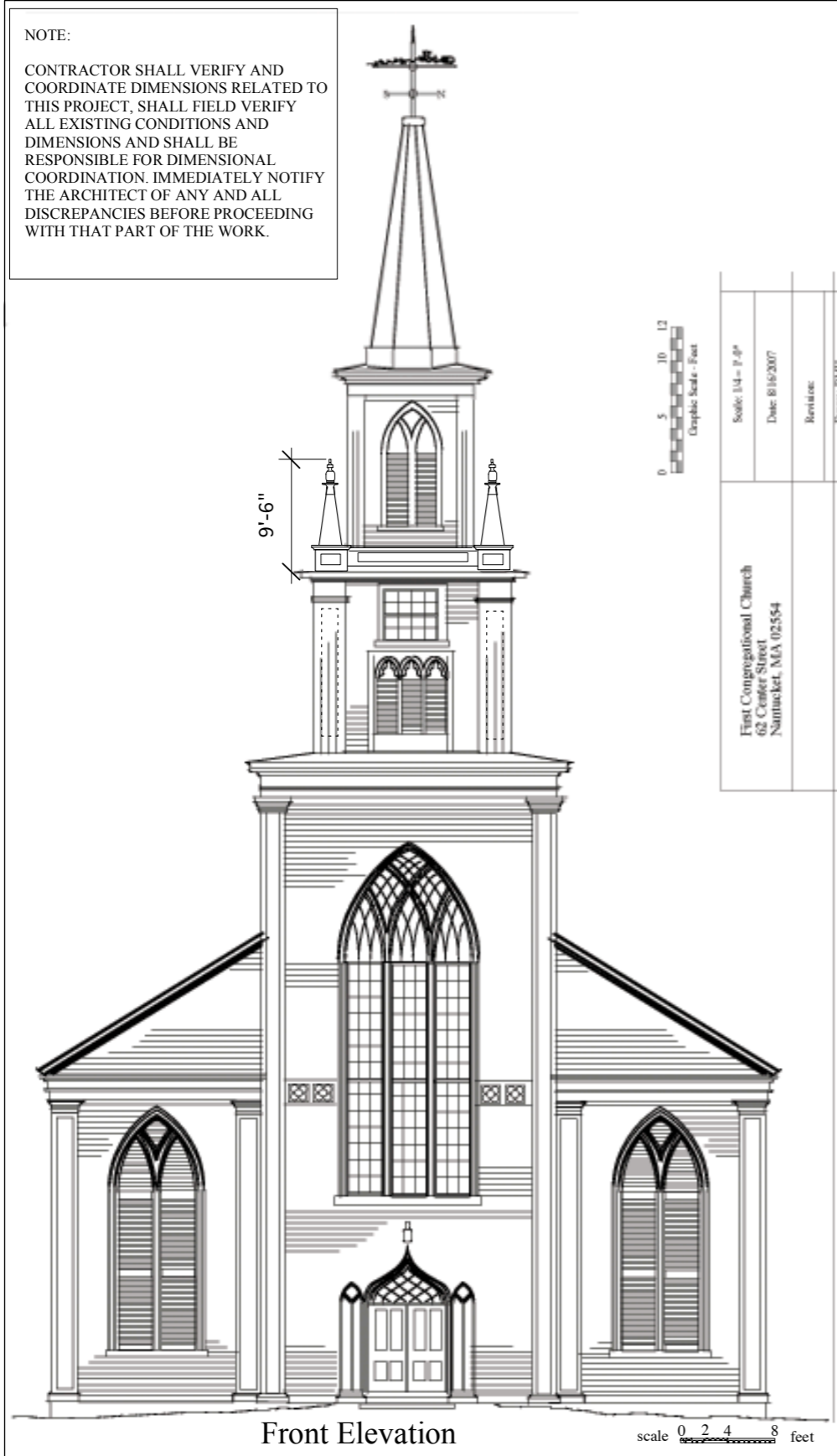
**First Congregational Church
Nantucket, MA
Restoration and Conservation
Final Restoration Drawings**

June 16, 2008

**DMH Enterprises, Architects
104 Federal Street
Salem, MA 01970
617-745-2172
Cell 978-395-6381**

NOTE:

CONTRACTOR SHALL VERIFY AND COORDINATE DIMENSIONS RELATED TO THIS PROJECT. SHALL FIELD VERIFY ALL EXISTING CONDITIONS AND DIMENSIONS AND SHALL BE RESPONSIBLE FOR DIMENSIONAL COORDINATION. IMMEDIATELY NOTIFY THE ARCHITECT OF ANY AND ALL DISCREPANCIES BEFORE PROCEEDING WITH THAT PART OF THE WORK.



Client:
First Congregational Church, Nantucket, MA

Project:
First Congregational Church, Nantucket, MA

Frederic C. Detwiller

Architect & Preservation Planner

302 Central St. Georgetown, Massachusetts 01833

Tel. 978-352-2819 or 617-640-4935
e-mail: detwiller@rcn.com

date: 6/10/2008

scale: as noted

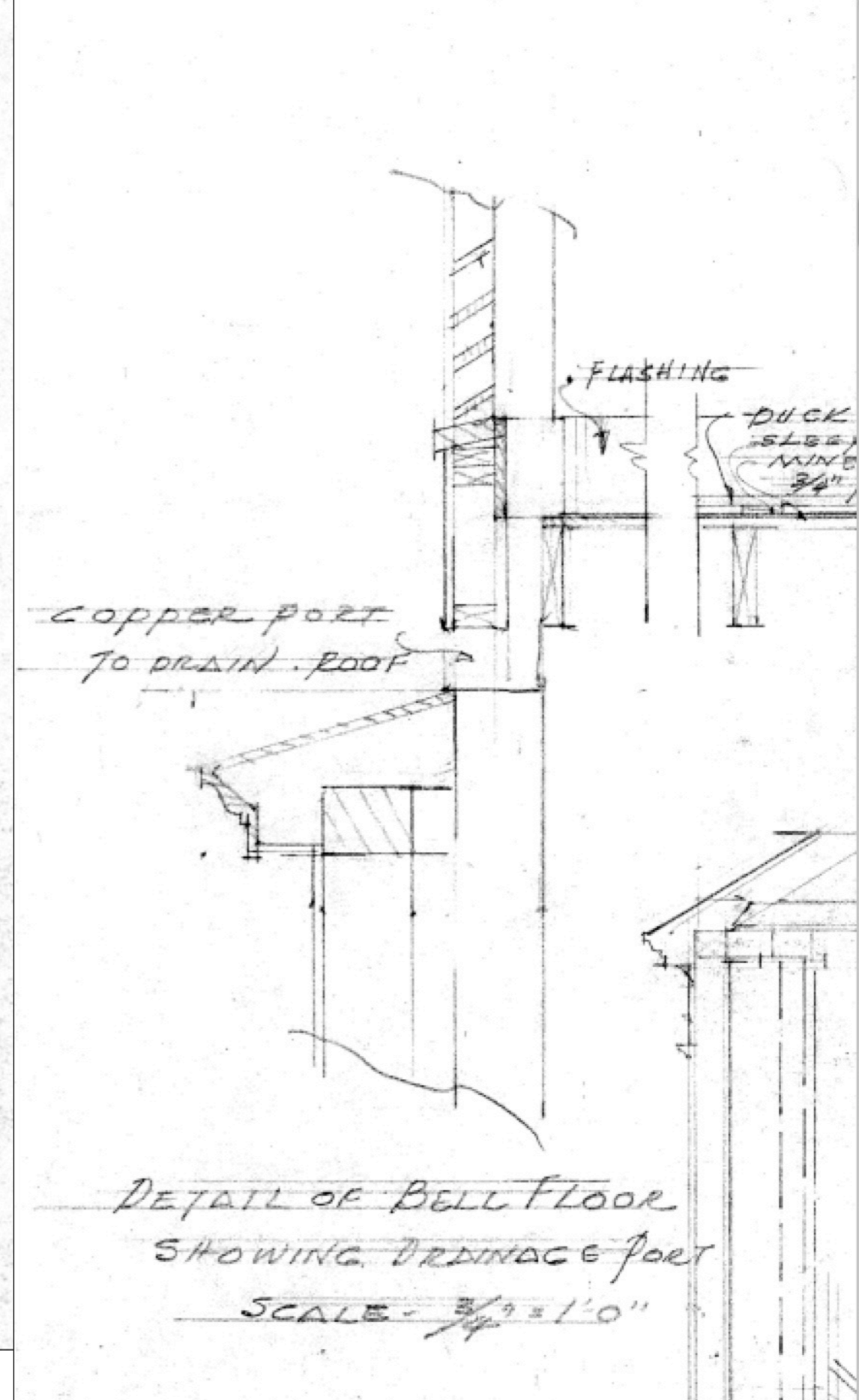
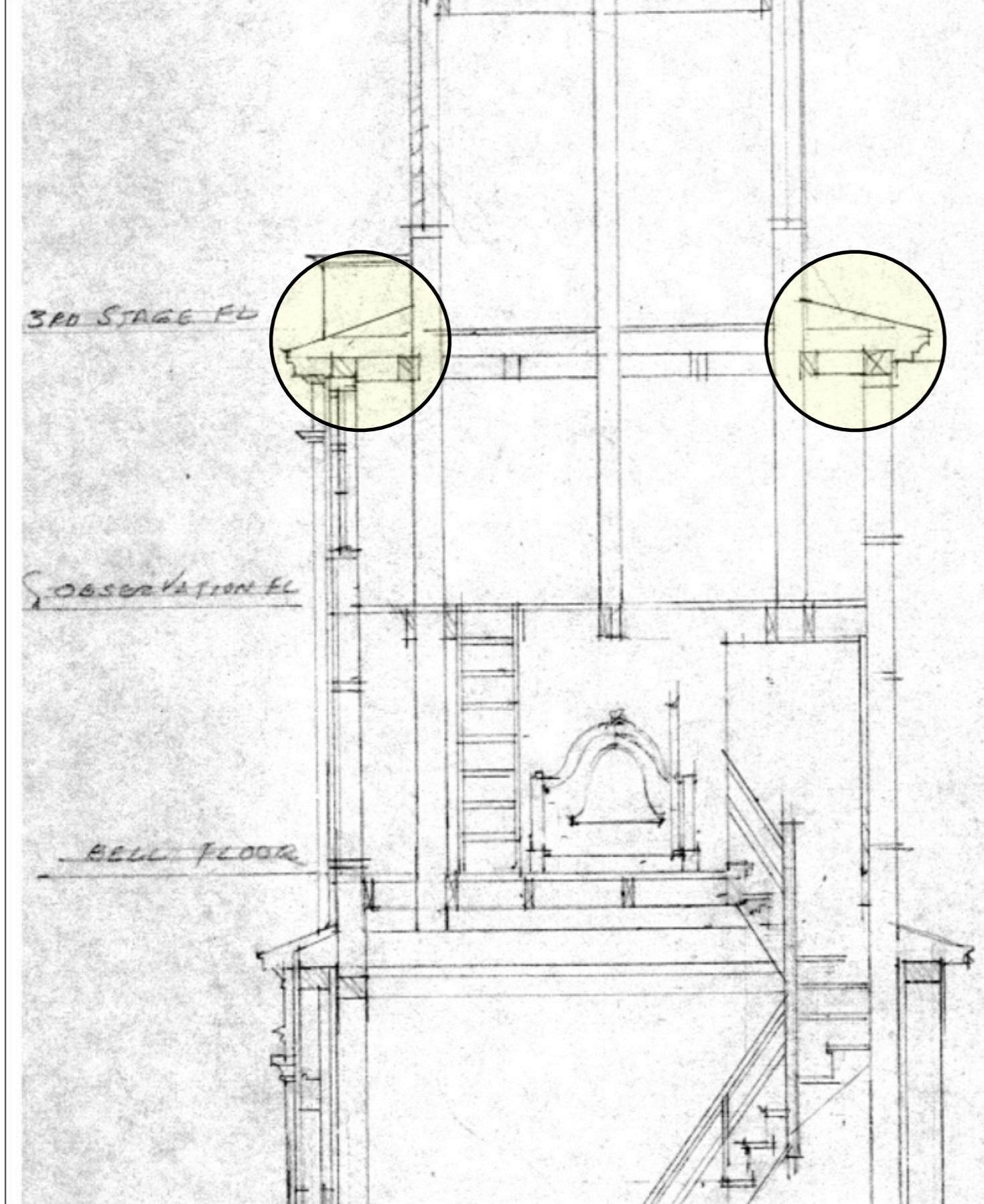
Dwg. Title
Parapet and Pinnacle Details

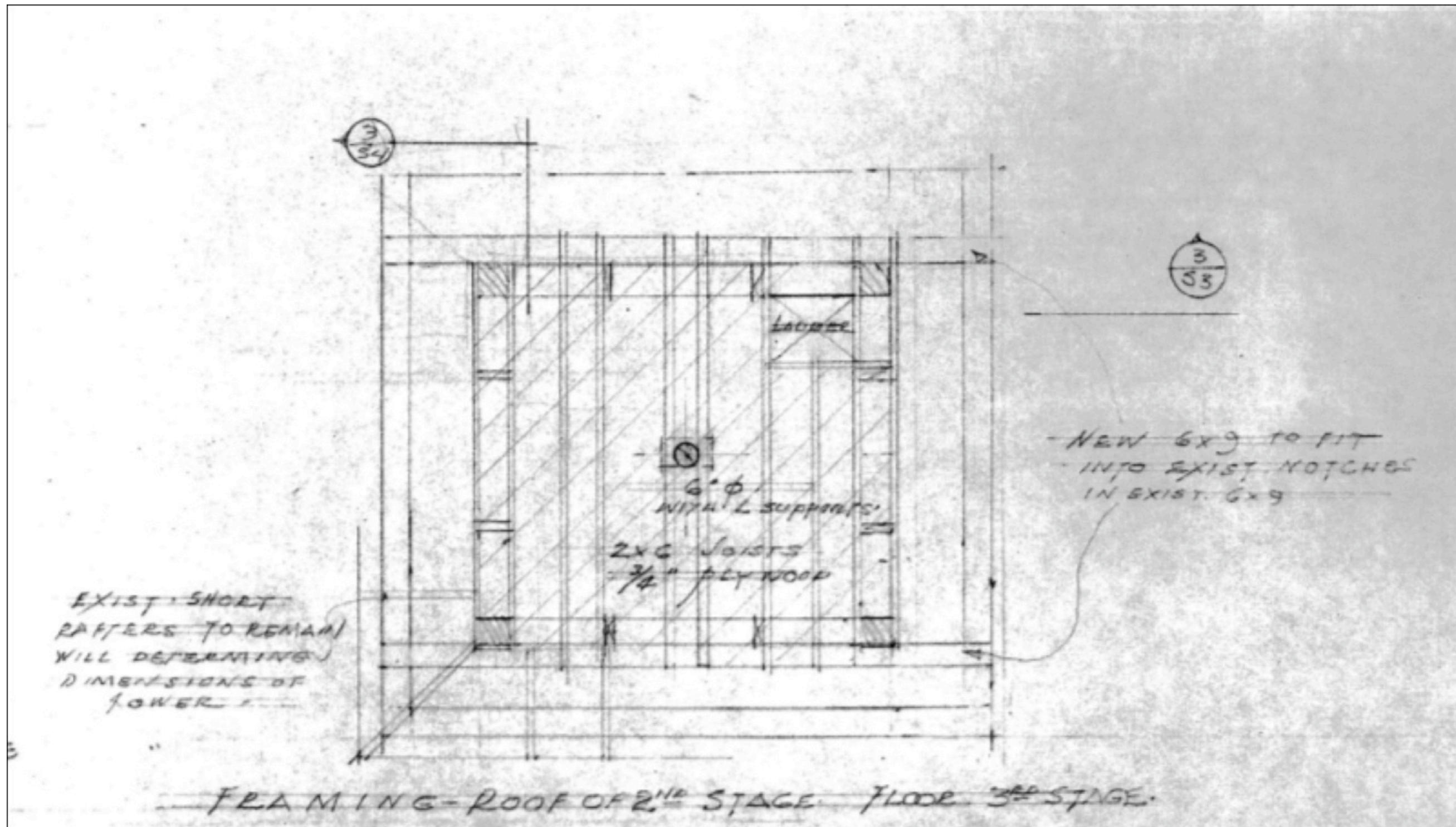
Dwg. No. A1

NEW ENGLAND LANDMARKS

Drawing of restored pinnacle and balustrade. Furnish & install four units. Paint with specified paint system. Furnish shop drawing of attachment details. See next pages for design drawings.

See separate pdf for high res image





Partial Plan from 1965 Ames & Graves drawings