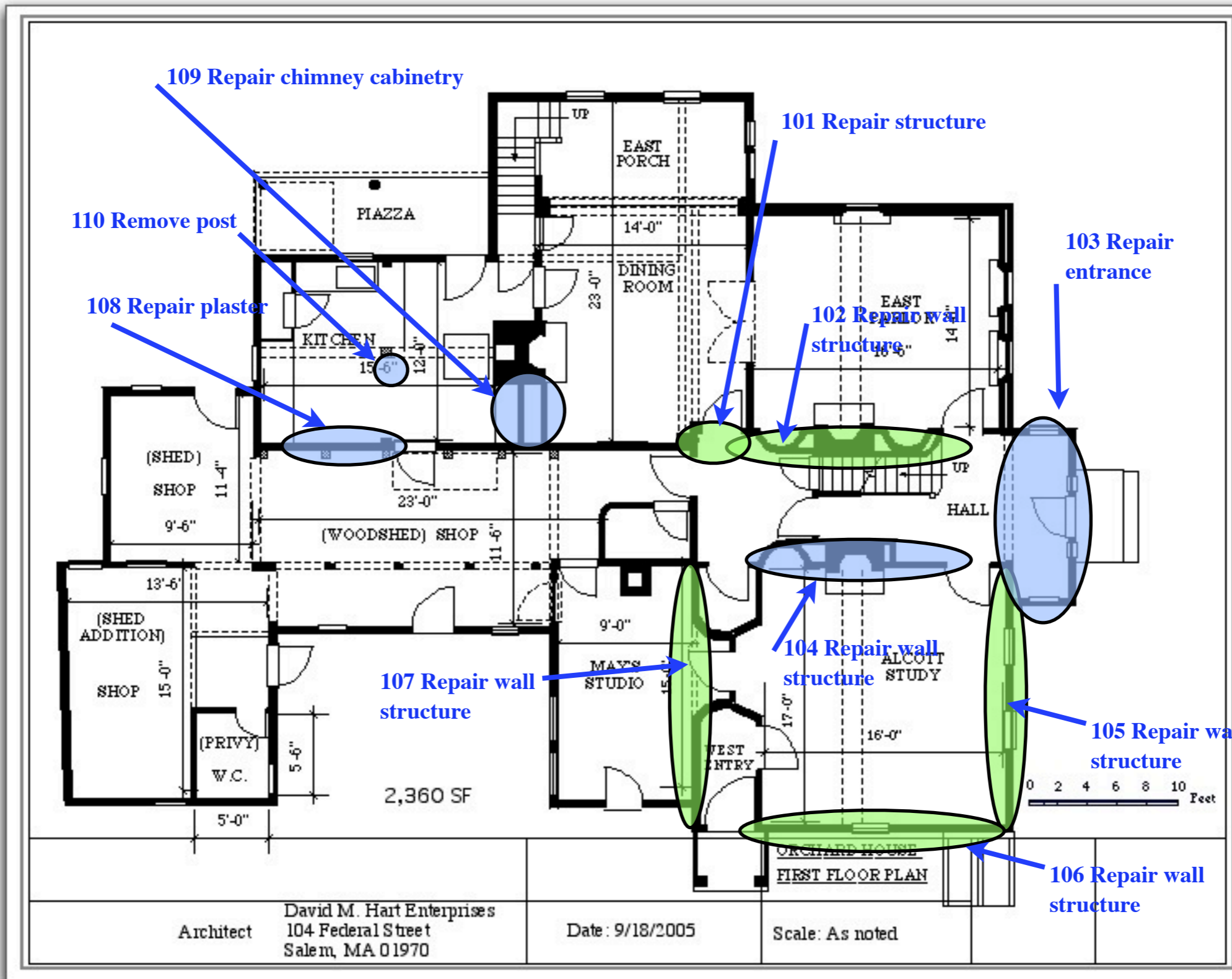



**Photos of repairs, conservation and restoration**

**Work Scheduled for 2008 - 2009**

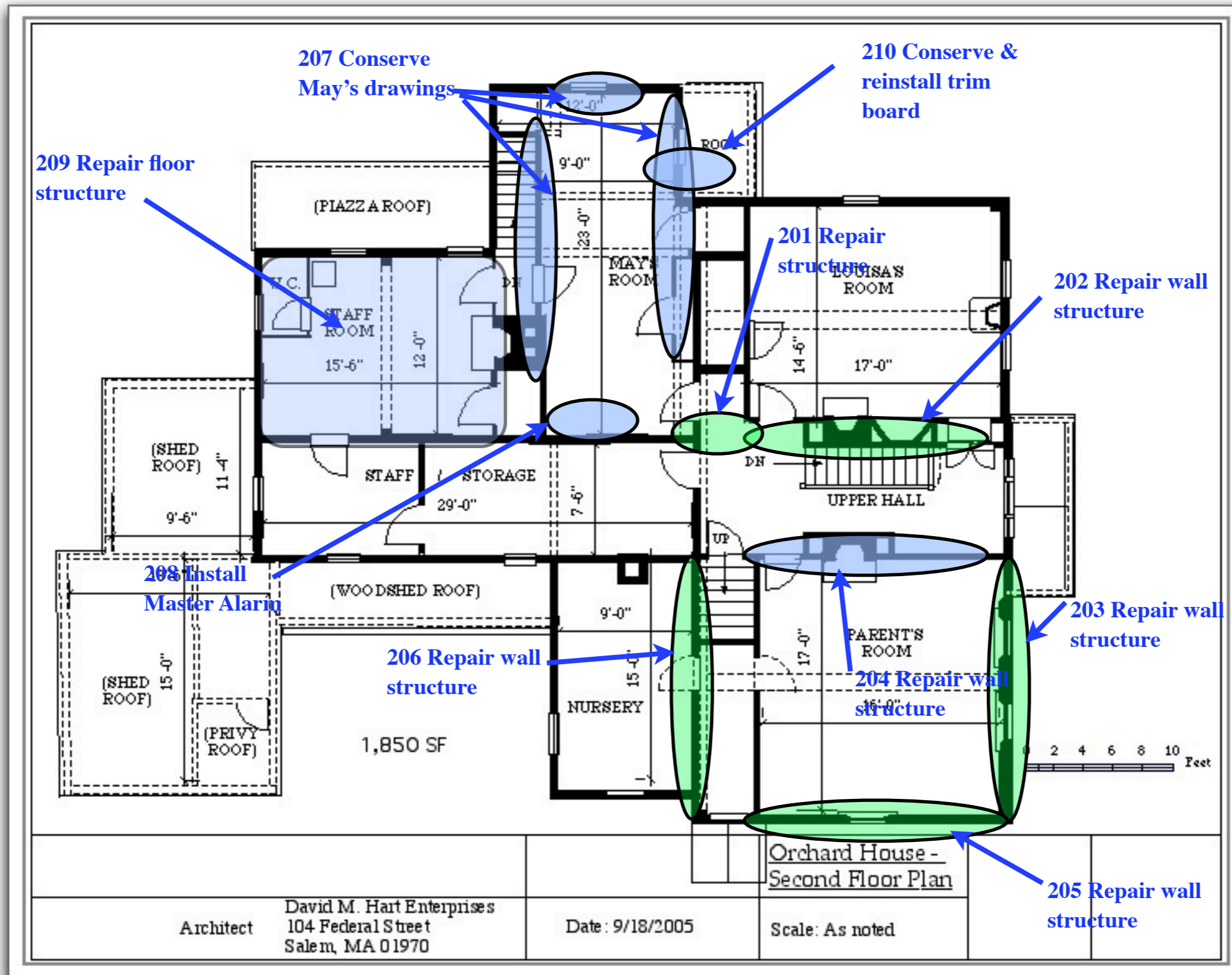
**Updated April 17, 2009**




 Indicates work scheduled for 2008

Location of needed repairs and restoration of finishes

First Floor



 Indicates work scheduled for 2008

Location of needed repairs and restoration of finishes

Second Floor

Wall structure  
opened up for  
examination and  
repair.



South facade

L1090745

3/24/2009



**Wall structure opened up for  
examination and repair.**

**L1090747**

**3/24/2009**

**West facade**

Structure inside south and west walls needs repairs



DSCN2224



DSCN2227

Views of Alcott's Study

Structure inside east wall needs repairs



DSCN2232

DSCN2233

Views of parlor



“Temporary” post to be removed and ceiling structure reinforced

Plaster repairs needed

DSCN2237

Views of Kitchen



DSCN2238



This photo is “before” restoration and needs are to carefully reconstruct the drying rack and cabinetry

This photo is “during” restoration and needs are to repair plaster



**Kitchen3**

**KitchenDryingRack**

Views of Kitchen

Repair structural system



DSCN2240

Views of dining room



DSCN2239



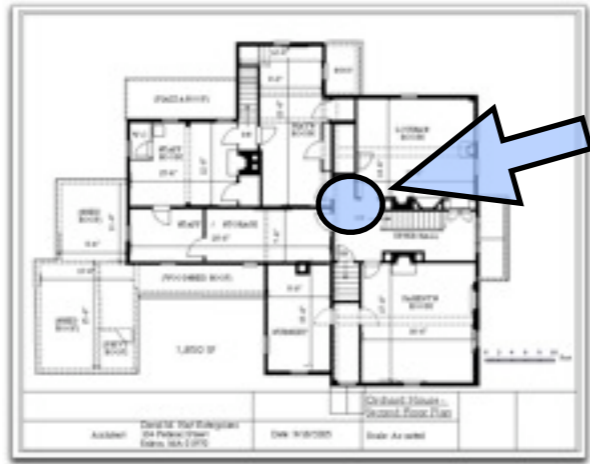
Structure inside partition needs repairs



DSCN2252

Views of Louisa May's Room

DSCN9133



**Second Floor**



**DSCN2257**



**DSCN2256**

**Structure needs repair, steel column removed and finishes restored**



**Second Floor**

**Early shingles on north wall of “Mansion House” attached with old “cut nails”.**

**Frame of “Tenant House”**

**This photo shows the structure of the walls between to “Mansion House” and the “Tenant House”**

**Wall structure opened up for examination and repair.**

**L1090797**